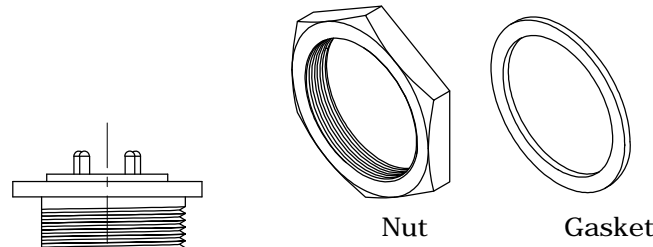
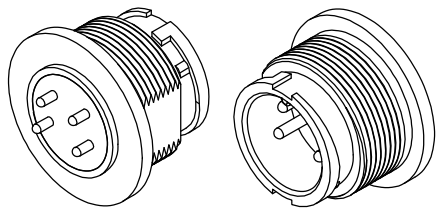


REV.	DESCRIPTION	DRAWN	DATE
1	INITIAL RELEASE	TIM	2020/06/10

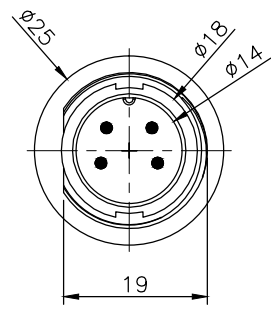
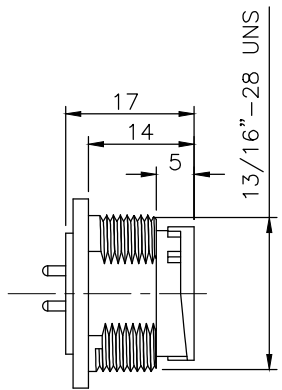
SPECIFICATION:

1. Current Rating: 2A/ 5A/ 10A per pin (see P2. table)
2. Contact Resistance: 10mΩ
3. Insulation Resistance: 100MΩ
4. Dielectric Withstanding Voltage: 500VAC
5. Durability: 1000 Cycle
6. Operating temperature range: -40°C~+85°C
7. Storage temperature range: -40°C~+85°C
8. Water Proof: IP67

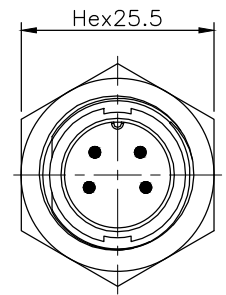


Nut Gasket

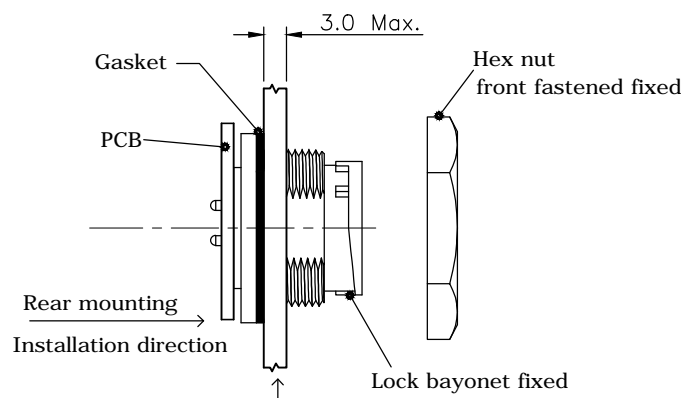
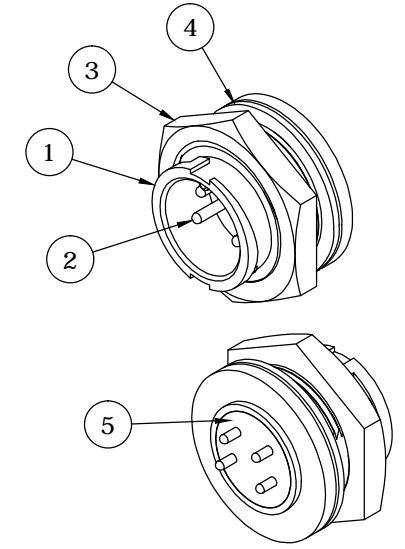
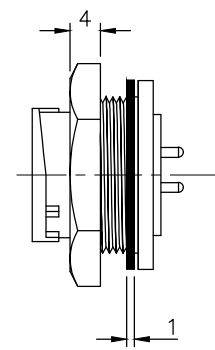
Accessories



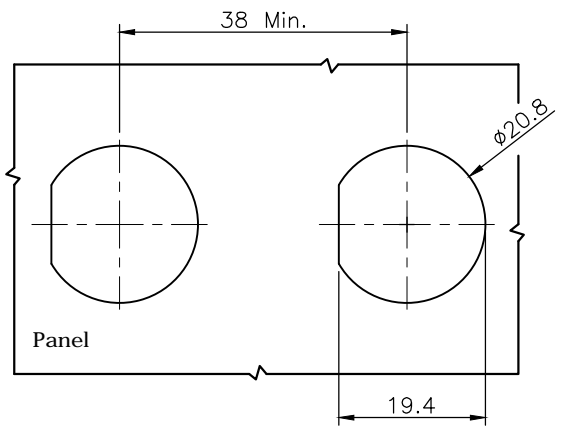
Body



Assembly View


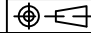


Rear mounting
Installation direction
Rear side (Inside) ← Panel (Fixed plate) → Front side (Outside)



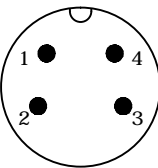
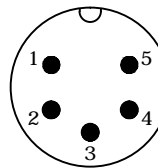
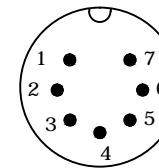
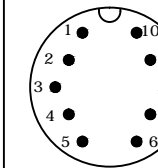
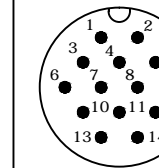
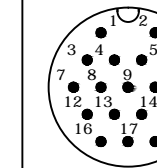
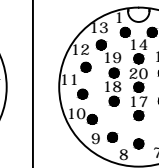
Recommend Panel Cut

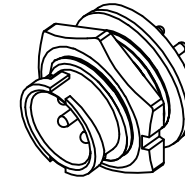
5	GLUE	EPOXY
4	GASKET	Silicone, Gray
3	HEX NUT	PA66, UL94V-0, Black
2	CONTACT	Brass, 1u" Min. Gold Plating over Nickel
1	HOUSING	PA66, UL94V-0, Black

NO.		PART NAME		DESCRIPTION	
UNLESS OTHERWISE SPECIFIED TOLERANCE					
UNIT:	DECIMAL	LINEAR	ANGLES	 www.attend.com.tw	
	X.	±0.50	±5°		
	X.X	±0.25	±3°		
	X.XX	±0.12	±1°		
DRAWN	Tim	2020/06/10	DRAWN NAME:		
CHECKED	Fros	2020/06/10	C Size Connector, Panel Fixed Front Fastened Bayonet, M Skt M DIP Pin		
APPROVED	Ken	2020/06/10	PRODUCT NO.	see page 2 table	
	SCALE	SHEET	SIZE	FILE NAME	227C-DMMO_B_1
	1/1	1/3	A4		


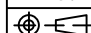
REV.	DESCRIPTION	DRAWN	DATE
	SEE SHEET ONE		

TABLE: Pin Count/ Pin Assignment/ Current Rating/ Part Number

Part Number	227C-04M03	227C-05M03	227C-07M02	227C-10M02	227C-14M01	227C-18M01	227C-20M02
Pin Assignment							
Pin Count	4Pin	5Pin	7Pin	10Pin	14Pin	18Pin	20Pin
Current Rating	10A	10A	5A	2A	5A	2A	2A

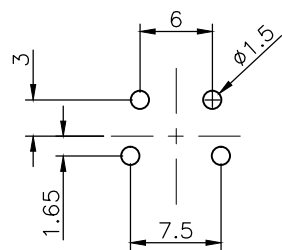


Drawing Number: 227C-DMM0
 Description: C size connector, panel fixed front fastened bayonet lock, male Socket male pin, DIP type

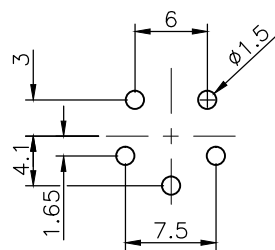
UNLESS OTHERWISE SPECIFIED TOLERANCE				 www.attend.com.tw			
UNIT:	DECIMAL	LINEAR	ANGLES				
mm	X.	±0.50	±5°				
	X.X	±0.25	±3°				
	X.XX	±0.12	±1°				
DRAWN	Tim	2020/06/10	DRAWN NAME:				
CHECKED	Fros	2020/06/10	C Size Connector, Panel Fixed Front Fastened Bayonet, M Skt M DIP Pin				
APPROVED	Ken	2020/06/10	PRODUCT NO.	see table			
	SCALE 1/1	SHEET 2/3	SIZE A4	FILE NAME	227C-DMM0_B_1		

REV.	DESCRIPTION	DRAWN	DATE
	SEE SHEET ONE		

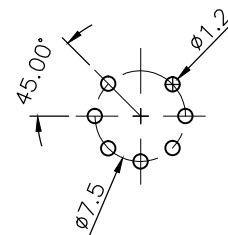
Recommended layout (top view)
 General tolerance: $\pm 0.05\text{mm}$



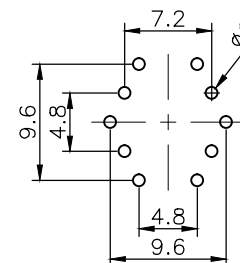
4P/10A



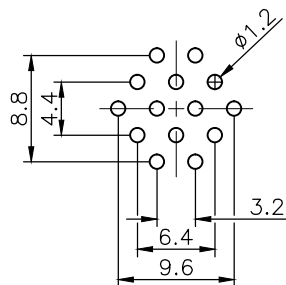
5P/10A



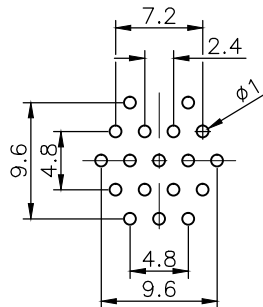
7P/5A



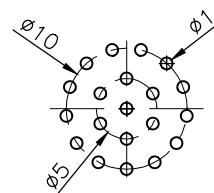
10P/2A




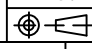
14P/5A



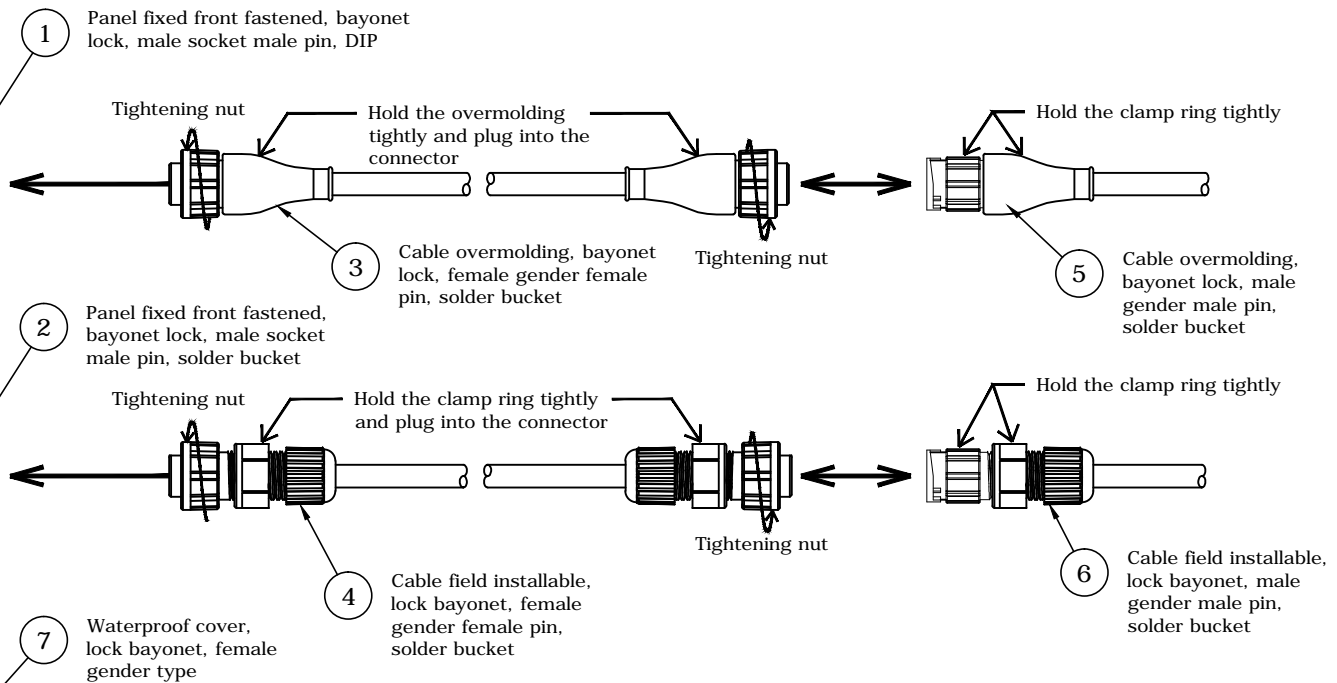
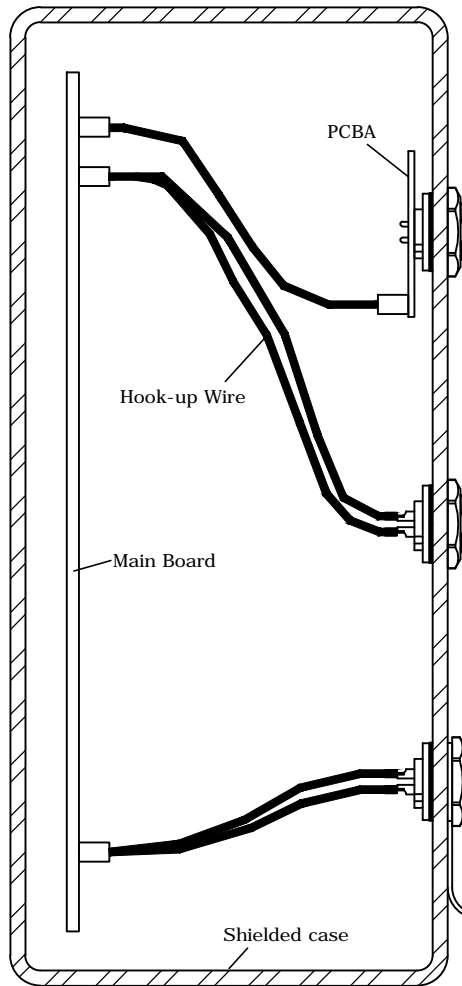
18P/2A



20P/2A


UNLESS OTHERWISE SPECIFIED TOLERANCE				 www.attend.com.tw	
UNIT:	DECIMAL	LINEAR	ANGLES		
mm	X.	± 0.50	$\pm 5^\circ$		
	X.X	± 0.25	$\pm 3^\circ$		
	X.XX	± 0.12	$\pm 1^\circ$		
DRAWN	Tim	2020/06/10	DRAWN NAME:		
CHECKED	Fros	2020/06/10	C Size Connector, Panel Fixed Front Fastened Bayonet, M Skt M DIP Pin		
APPROVED	Ken	2020/06/10	PRODUCT NO.	see page 2 table	
	SCALE 1.6/1	SHEET 3/3	SIZE A4	FILE NAME	227C-DMM0_B_1

REV.	DESCRIPTION	DRAWN	DATE
1	INITIAL RELEASE	TIM	2020/06/10



Application	Ball no.	Drawing Number	Gender		Matchable drawing numbers			
			Conn. type	Pin type	1	2	3	4
Panel Fixed	①	227C-DMMO	Male	Male	227C-MFFO	227C-AFFO	227C-0001	
	②	227C-SMMO			③	④	⑦	
Cable	③	227C-MFFO	Female	Female	227C-DMMO	227C-SMMO	227C-MMMO	227C-AMMO
	④	227C-AFFO			①	②	⑤	⑥
	⑤	227C-MMMO	Male	Male	227C-MFFO	227C-AFFO	227C-0001	
⑥	227C-AMMO	③			④	⑦		
Accessories	⑦	227C-0001	Female		①	②	⑤	⑥

UNLESS OTHERWISE SPECIFIED TOLERANCE			
UNIT:	DECIMAL	LINEAR	ANGLES
mm	X.	±0.50	±5°
	X.X	±0.25	±3°
	X.XX	±0.12	±1°
DRAWN	Tim	2020/06/10	
CHECKED	Fros	2020/06/10	
APPROVED	Ken	2020/06/10	
SCALE	1/2	SHEET	1/1
		SIZE	A4


ATTEND
www.attend.com.tw

DRAWN NAME: C Size Water Proof Connector Application Drawing
 PRODUCT NO.:
 FILE NAME: 227C-Series_B_1