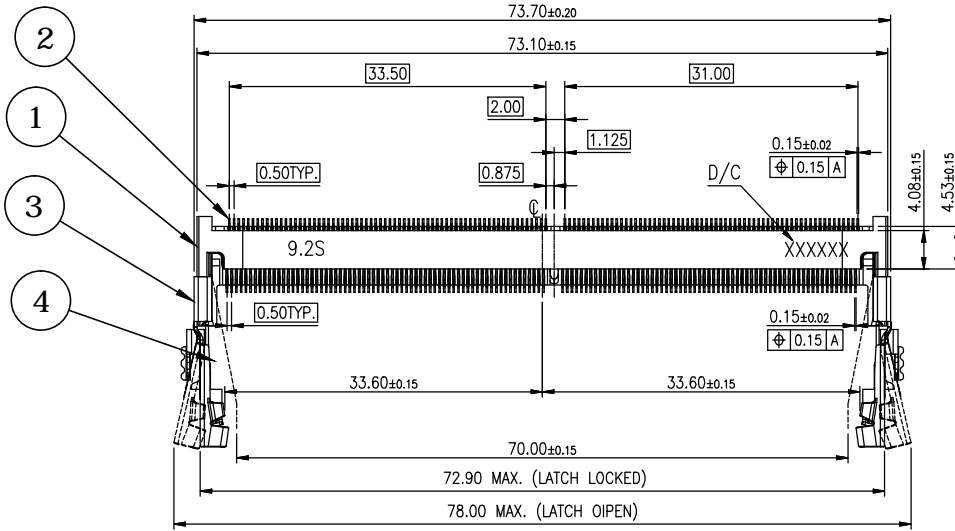


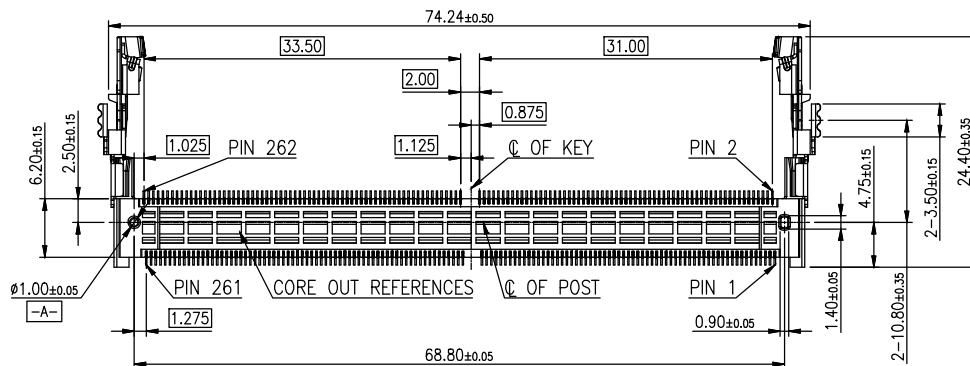
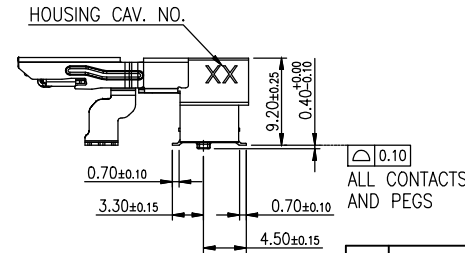
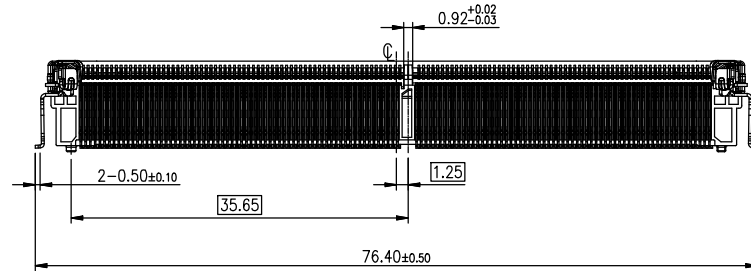
REV.	DESCRIPTION	DRAWN	DATE
1	INITIAL RELEASE	FROS	2021/03/23



DATE CODE: YYWWD  
 YY: YEAR  
 WW: WEEK (01~52)  
 D: DAY (1~7)

**SPECIFICATION:**

1. ELECTRICAL
  - 1.1 Current Rating: 0.6A per pin
  - 1.2 Voltage Rating: 25V AC
  - 1.3 Contact Resistance: 60mΩ max.
  - 1.4 Insulation Resistance: 100MΩ
  - 1.5 Dielectric Withstanding Voltage: 500VAC
2. MECHANICAL
  - 2.1 Durability: 50 Cycle
  - 2.2 Insertion Force: 59.8N max.
  - 2.3 Extraction Force: 44.6N max.
3. ENVIRONMENTAL
  - 3.1 Operating temperature range: -40°C~+85°C
  - 3.2 Storage temperature range: -40°C~+85°C
4. SOLDER ABILITY
  - 4.1 Recommended IR-Reflow Temperature: 260°C



4	PEG	Stainless steel, 50u"~150u" matte tin plating over 50u"~150u" nickel plating
3	LATCH	Stainless steel
2	CONTACT	Copper alloy, 1u" gold plating on contact and solder area, under plating nickel
1	HOUSING	Thermoplastic, UL94V-0, Black
NO.	PART NAME	DESCRIPTION

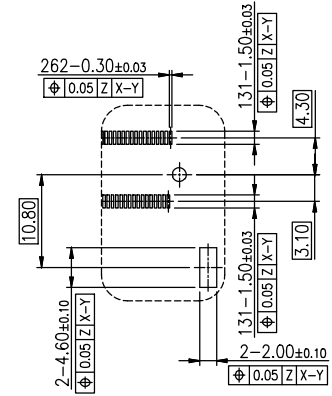
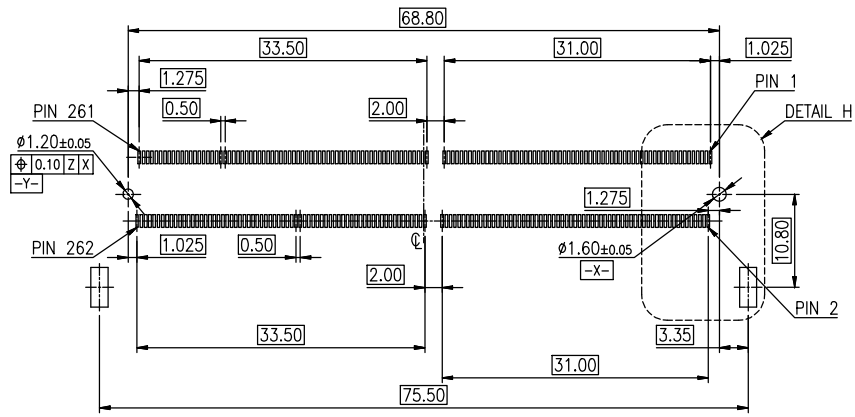
UNLESS OTHERWISE SPECIFIED TOLERANCE			
UNIT:	DECIMAL	LINEAR	ANGLES
mm	X.	±0.50	±5°
	X.X	±0.25	±3°
	X.XX	±0.12	±1°



www.attend.com.tw

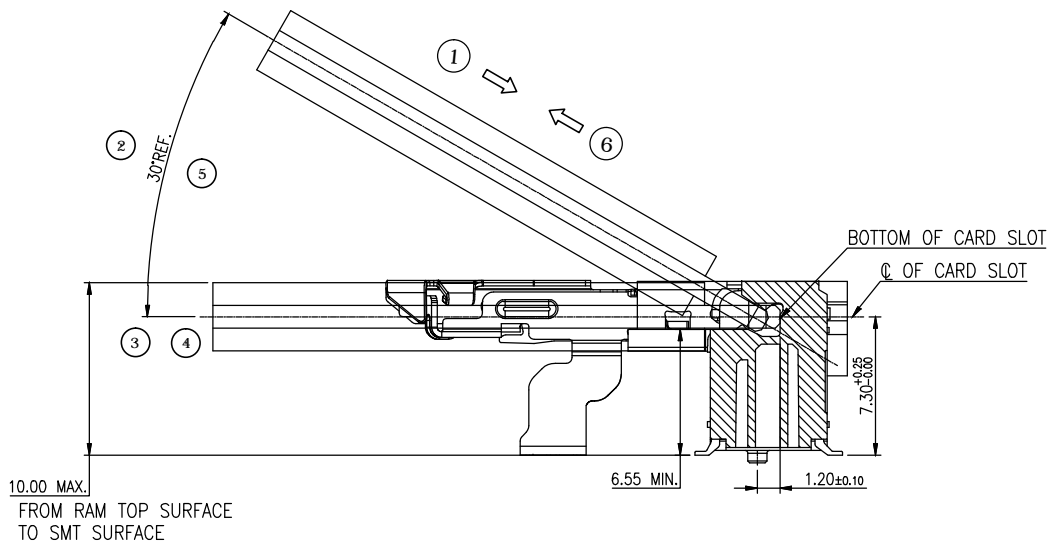
DRAWN	Fros	2021/03/23	DRAWN NAME:	DDR5 SODIMM Socket, Horizontal			
CHECKED	Tim	2021/03/23		9.2H, STD, G/F, Black, Reel, Solder PEG			
APPROVED	Ken	2021/03/23	PRODUCT NO.	126A-92A00			
SCALE	1.25	SHEET	1/2	SIZE	A4	FILE NAME	126A-92A00_B_1

REV.	DESCRIPTION	DRAWN	DATE
	see sheet one		



DETAIL H  
SCALE 1:1

RECOMMEND P.C.BOARD LAYOUT  
PCB THICKNESS 0.80mm MIN.  
PCB LAYOUT GENERIC TOLERANCE:±0.05  
( $\square$ -Z:PCB SURFACE)



MATING: ① INSERTING → ② ROTATING → ③ FIXED  
UNMATING: ④ UNFIXED → ⑤ RISE UP → ⑥ EXTRACTING

MATING/UNMATING VIEW

UNLESS OTHERWISE SPECIFIED TOLERANCE				
UNIT:	DECIMAL	LINEAR	ANGLES	
mm	X.	±0.50	±5°	
	X.X	±0.25	±3°	
	X.XX	±0.12	±1°	
DRAWN	Fros	2021/03/23	DRAWN NAME: DDR5 SODIMM Socket, Horizontal 9.2H, STD, G/F, Black, Reel, Solder PEG	
CHECKED	Tim	2021/03/23		
APPROVED	Ken	2021/03/23		
SCALE	1.25	SHEET 2/2	SIZE A4	FILE NAME 126A-92A00_B_1



www.attend.com.tw

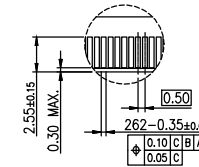
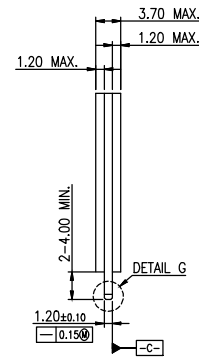
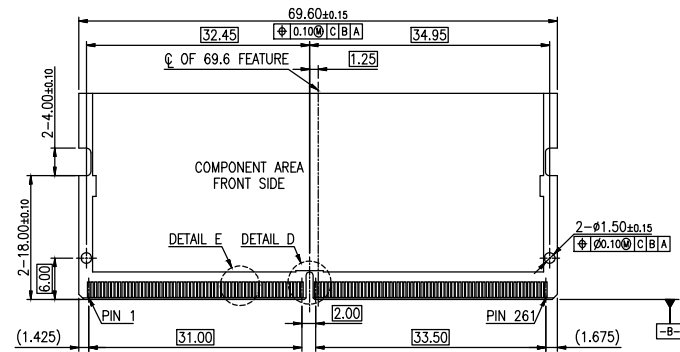
G  
F  
E  
D  
C  
B  
A

G  
F  
E  
D  
C  
B  
A

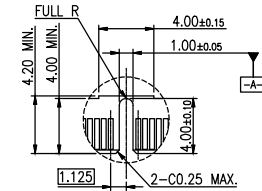
1 2 3 4 5 6 7 8 9 10

1 2 3 4 5 6 7 8 9 10

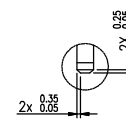
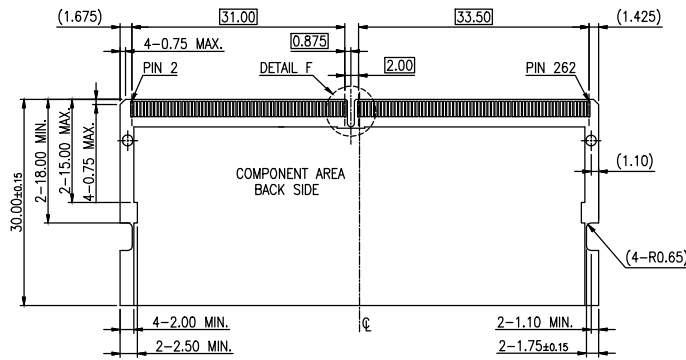
REV.	DESCRIPTION	DRAWN	DATE
1	INITIAL RELEASE	FROS	2021/03/23



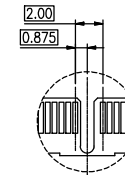
DETAIL E  
SCALE 2:1



DETAIL D  
SCALE 2:1


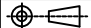


DETAIL G  
SCALE 2:1

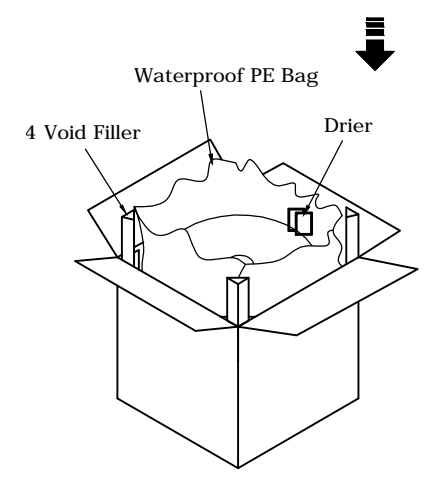
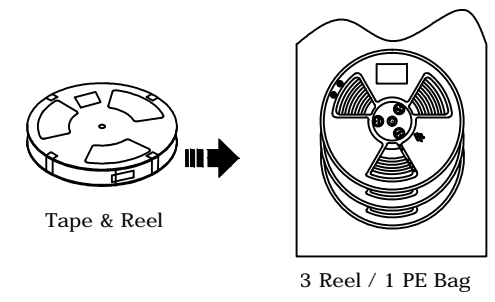
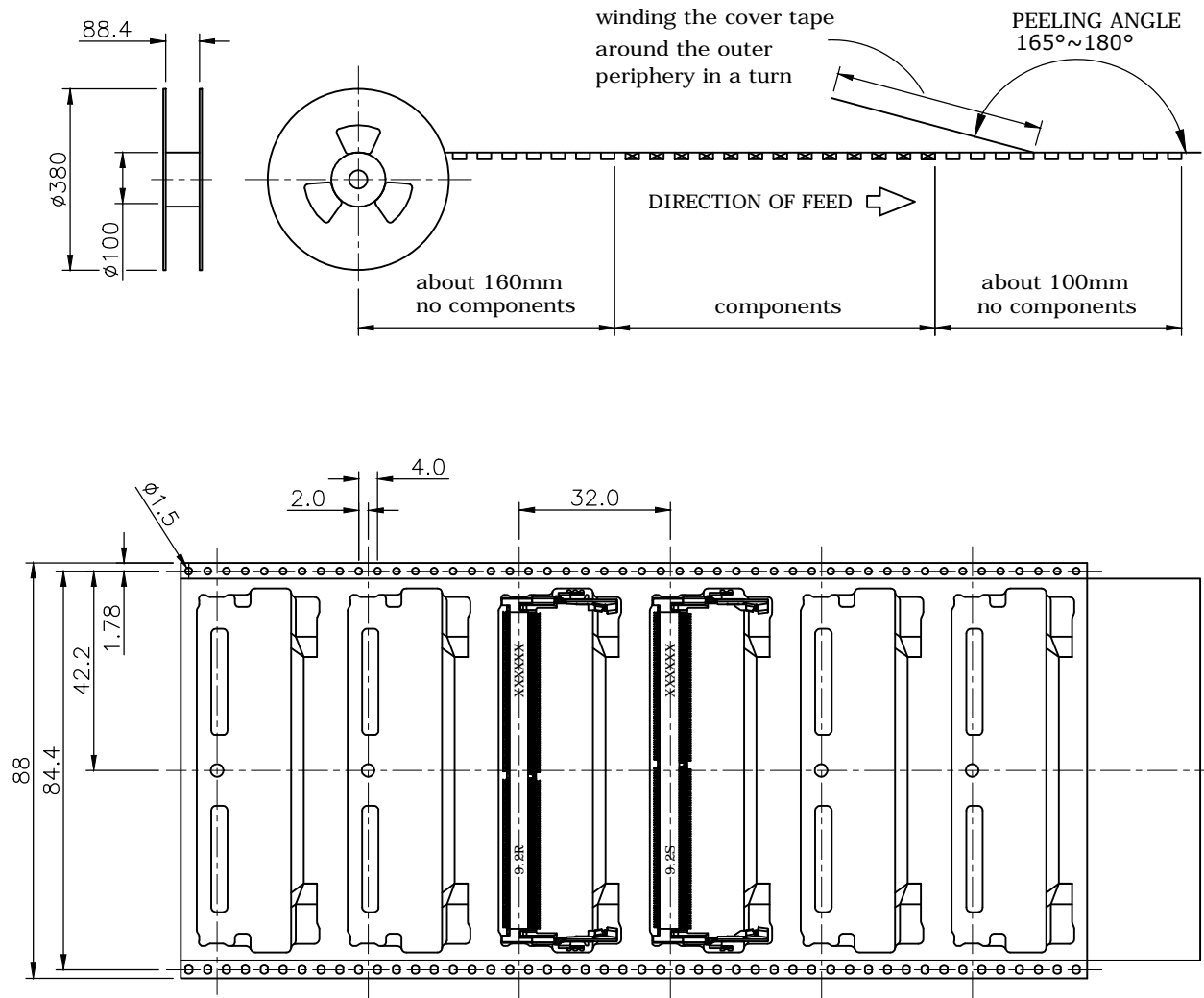


DETAIL F  
SCALE 2:1

RECOMMEND MODULE CONFIGURATION

UNLESS OTHERWISE SPECIFIED TOLERANCE					
UNIT:	DECIMAL	LINEAR	ANGLES		
mm	X.	±0.50	±5°	www.attend.com.tw	
	X.X	±0.25	±3°		
	X.XX	±0.12	±1°		
DRAWN	Fros	2021/03/23	DRAWN NAME:		
CHECKED	Tim	2021/03/23	262 PIN DDR5 SODIMM, 0.5MM PITCH PACKAGE		
APPROVED	Ken	2021/03/23	PRODUCT NO.		
	SCALE 1.25	SHEET 1/1	SIZE A4	FILE NAME	126A-CARD_B_1

REV.	DESCRIPTION	DRAWN	DATE
1	INITIAL RELEASE	FROS	2021/03/23



PART NO.	PCS/REEL	REEL/CARTON	PCS/CARTON
126A-92A00	270	3	810
126A-92A10	270	3	810

UNLESS OTHERWISE SPECIFIED TOLERANCE

UNIT:	DECIMAL	LINEAR	ANGLES
mm	X.	±0.50	±5°
	X.X	±0.25	±3°
	X.XX	±0.12	±1°



www.attend.com.tw

DRAWN	Fros	2021/03/23	DRAWN NAME: Packaging for DDR5 SODIMM Socket, Horizontal, 9.2H, Reel 88.0mm
CHECKED	Tim	2021/03/23	
APPROVED	Ken	2021/03/23	
			PRODUCT NO. SEE TABLE
SCALE	N/A	SHEET 1/1	SIZE A4
FILE NAME		126A-92AX0_D_1	