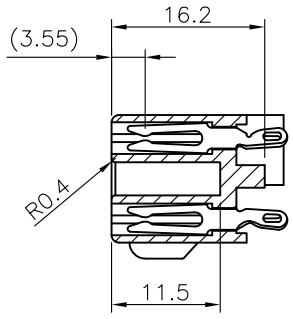
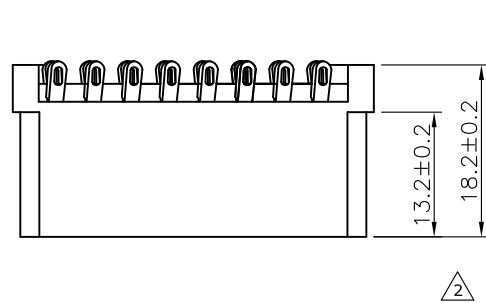


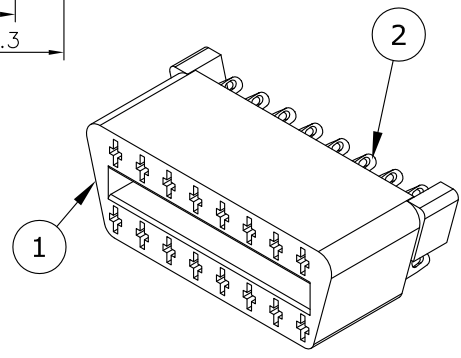
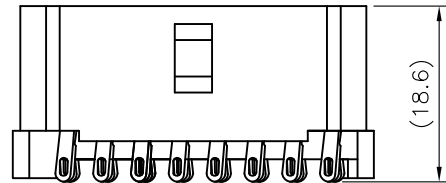
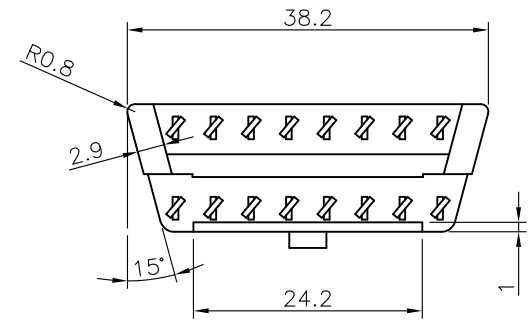
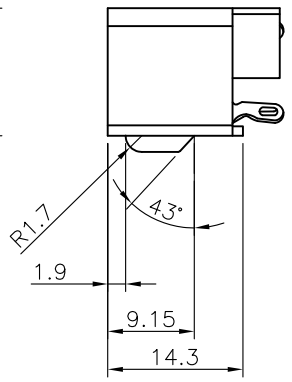
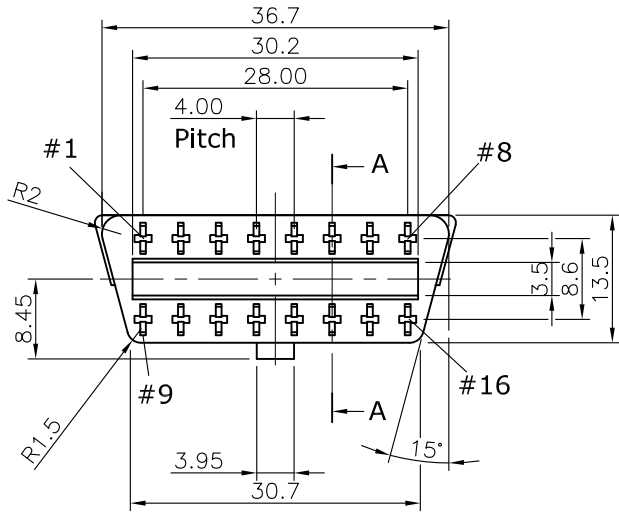
REV.	DESCRIPTION	DRAWN	DATE
1	INITIAL RELEASE	TIM	2019/03/15
2	ECR2100016	Fros	2021/07/29

SPECIFICATION:

1. ELECTRICAL
 - 1.1 Current Rating: 6A Max
 - 1.2 Voltage Rating: 30V DC
 - 1.3 Contact Resistance: 100mΩ Max
 - 1.4 Insulation Resistance: 100MΩ Min
 - 1.5 Dielectric Withstanding Voltage: 1000VAC
2. MECHANICAL
 - 2.1 Durability: 200 Cycle
 - 2.2 Insertion Force: 142N max.
 - 2.3 Extraction Force: 88N max.
3. ENVIRONMENTAL
 - 3.1 Operating temperature range: -40°C~+85°C



SECTION A-A



2	CONTACT	BRASS, BRIGHT TIN PLATED UNDER NICKEL	
1	HOUSING	PA66, UL94V-0, BLACK	
NO	PART NAME	DESCRIPTION	
UNLESS OTHERWISE SPECIFIED TOLERANCE			
UNIT:	DECIMAL	LINEAR	ANGLES
mm	X.	±0.50	±5°
	X.X	±0.25	±3°
	X.XX	±0.12	±1°
www.attend.com.tw			
DRAWN	Tim	2019/03/15	DRAWN NAME:
CHECKED	Fros	2019/03/15	OB2 Type A Female Connector
APPROVED	Ken	2019/03/15	16Pin, 12V, Solder Pin, Overmold
SCALE	SHEET	SIZE	PRODUCT NO.
1.25	1/1	A4	226B-1201
FILE NAME	226B-1201_B_2		