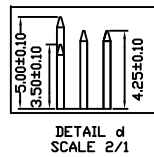
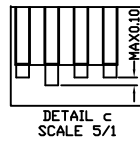
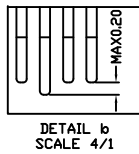
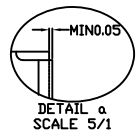
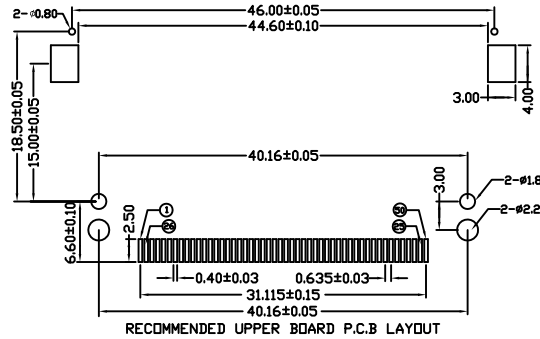
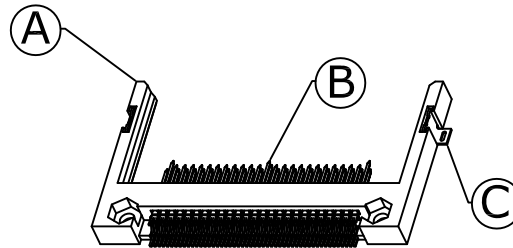
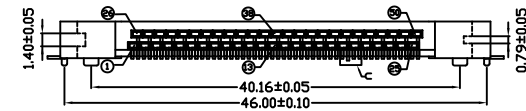
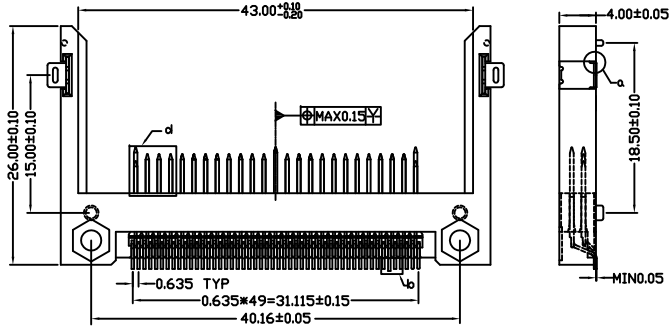
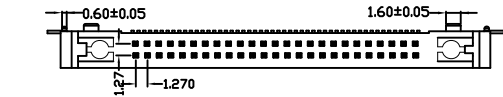


| | | | | | | | | | |
|----------------------|---|-----------------------|------------------------------|---|----------|--------------------------------------|---|---|----|
| 1 | 2 | 3 | 4 | 5 | 6 | 7 | 8 | 9 | 10 |
| SWITCH CIRCUIT | | | MATERIAL AND FINISH AS BELOW | | | | | | |
| WHEN CARD IS EJECTED | | WHEN CARD IS INSERTED | | A | Housing | LCP UL94V-0, Color:Ivory | E | | |
| | | | | B | Contact | Brass C2680, Gold Plated Over Nickel | F | | |
| | | | | C | Holddown | Brass C2680, Tin Plated | G | | |
| | | | | D | | | H | | |



| PIN NUMBER | DIM.L |
|----------------|-------|
| 25 26 | 3.50 |
| ALL OTHER PINS | 4.25 |
| 1 13 38 50 | 5.00 |

SPECIFICATION:

1. ELECTRICAL

- 1.1 Current Rating: 0.5AMP
- 1.2 Voltage Rating: 100VAC
- 1.3 Contact Resistance: 40mΩ
- 1.4 Insulation Resistance: 1000MΩ
- 1.5 Dielectric Withstanding Voltage: 500VAC for 1 minute

2. MECHANICAL

- 2.1 Durability: 10000Cycle
- 2.2 Insertion Force: 28.8N
- 2.3 Extraction Force: 4.9N

3. ENVIRONMENTAL

- 3.1 Operating temperature range: -40°C to +85°
- 3.2 Storage temperature range: -40°C to +85°

4. SOLDER ABILITY

- 4.1 Recommended IR Reflow Temperature: 260°C 10Sec

| | | | | | | | | | | | |
|----|----|----|----|----|----|----|----|----|-----|-----|-----|
| P1 | P2 | P3 | P4 | P5 | P6 | P7 | P8 | P9 | P10 | P11 | P12 |
|----|----|----|----|----|----|----|----|----|-----|-----|-----|

PIN ASSIGNMENT

101D-RAAA-R01 CF Socket Slim Type Peg:40.16,Contact Area:Gold Flash

PRODUCT NO. DESCRIPTION

| | | |
|--------------------------------------|----------|------------|
| UNLESS OTHERWISE SPECIFIED TOLERANCE | | |
| ANGLES | ANG. | ±5° |
| LINEAR | 0. | ±0.3 |
| | 0.0 | ±0.25 |
| | 0.00 | ±0.20 |
| SCALE | AS SHOWN | UNIT: mm |
| DRAWN | Willis | 2012/11/13 |
| CHECKED | Angel | 2012/11/13 |
| APPROVED | Ken | 2012/11/13 |



www.attend.com.tw

DRAWN NAME: CF Slim Socket Reverse Type Locating Peg:40.16

PRODUCT NO. 101D-RAAA-R01

| | | | | | |
|------|-------------|------|------|-------------|------|
| REV. | DESCRIPTION | DATE | REV. | DESCRIPTION | DATE |
| 1 | | | 4 | | |
| 2 | | | 5 | | |
| 3 | | | 6 | | |
| 4 | | | 7 | | |
| 5 | | | 8 | | |
| 6 | | | 9 | | |
| 7 | | | 10 | | |

- △ Revise:
- △ Revise:
- △ Revise: