

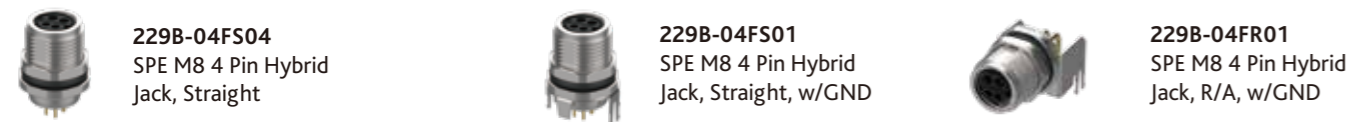
Waterproof Pogo Pin Connectors



Features

- Spring-loaded contacts absorb slight misalignments or dimensional variations for stable connection.
- Integrated magnets provide automatic alignment and secure mating.
- Supports up to 3A/24VDC power rating, making it ideal for moderate power transmission in rugged, waterproof applications.
- Designed with IP67 protection, effectively sealing out dust and water.
- Flexible customization available to accommodate different customer applications.

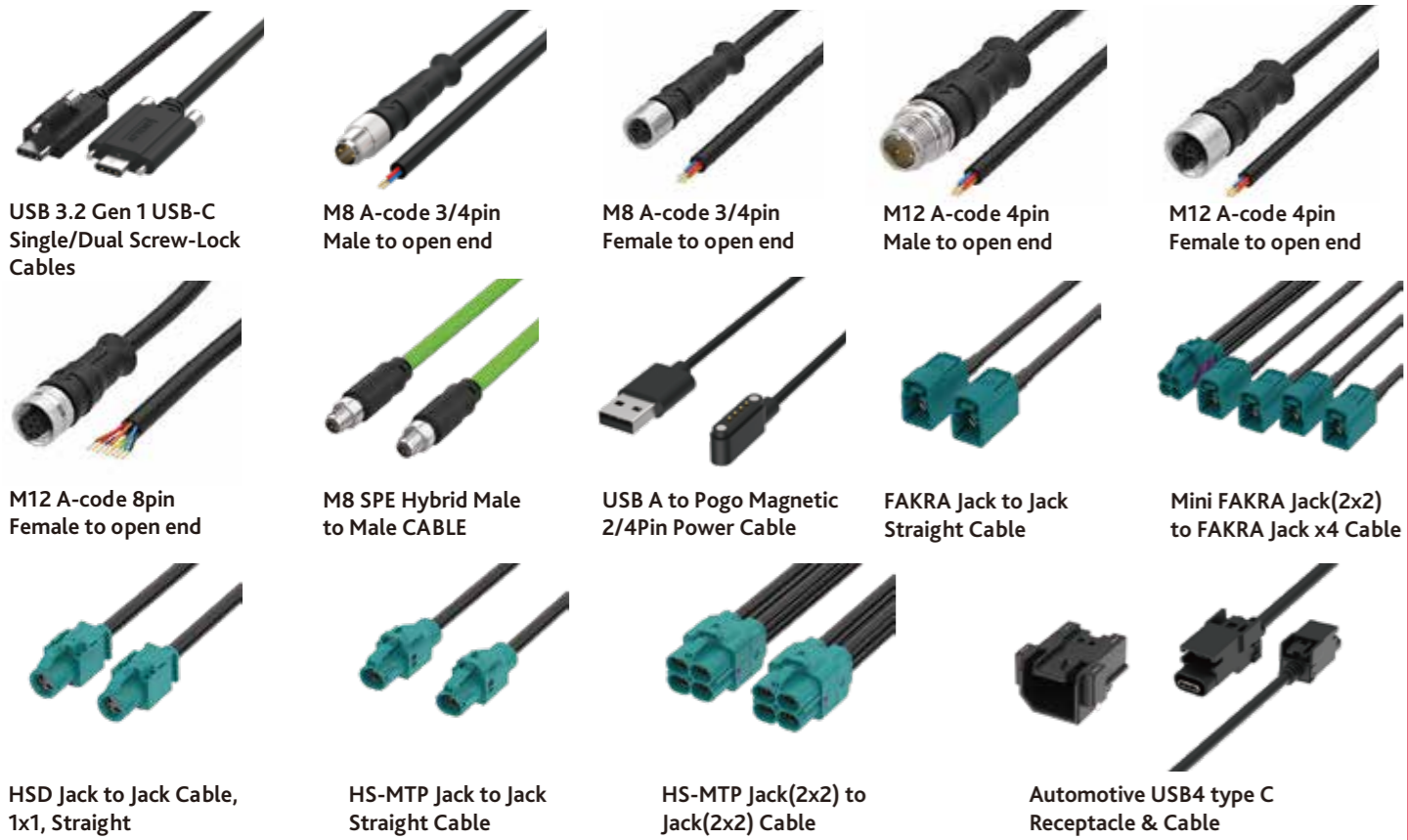
M8 SPE Hybrid Connectors



Features

- Integrates data and power in one interface
- Fully compliant with IEC 63171-6 specifications
- Supports IEEE 802.3 SPE T1 communication
- Current rating: up to 4A over signal pair
- Current rating: up to 8A over power pair
- Vertical and right-angle styles available
- Operating temperature range: -40°C to +85°C

Custom Cable Assemblies



Global Service

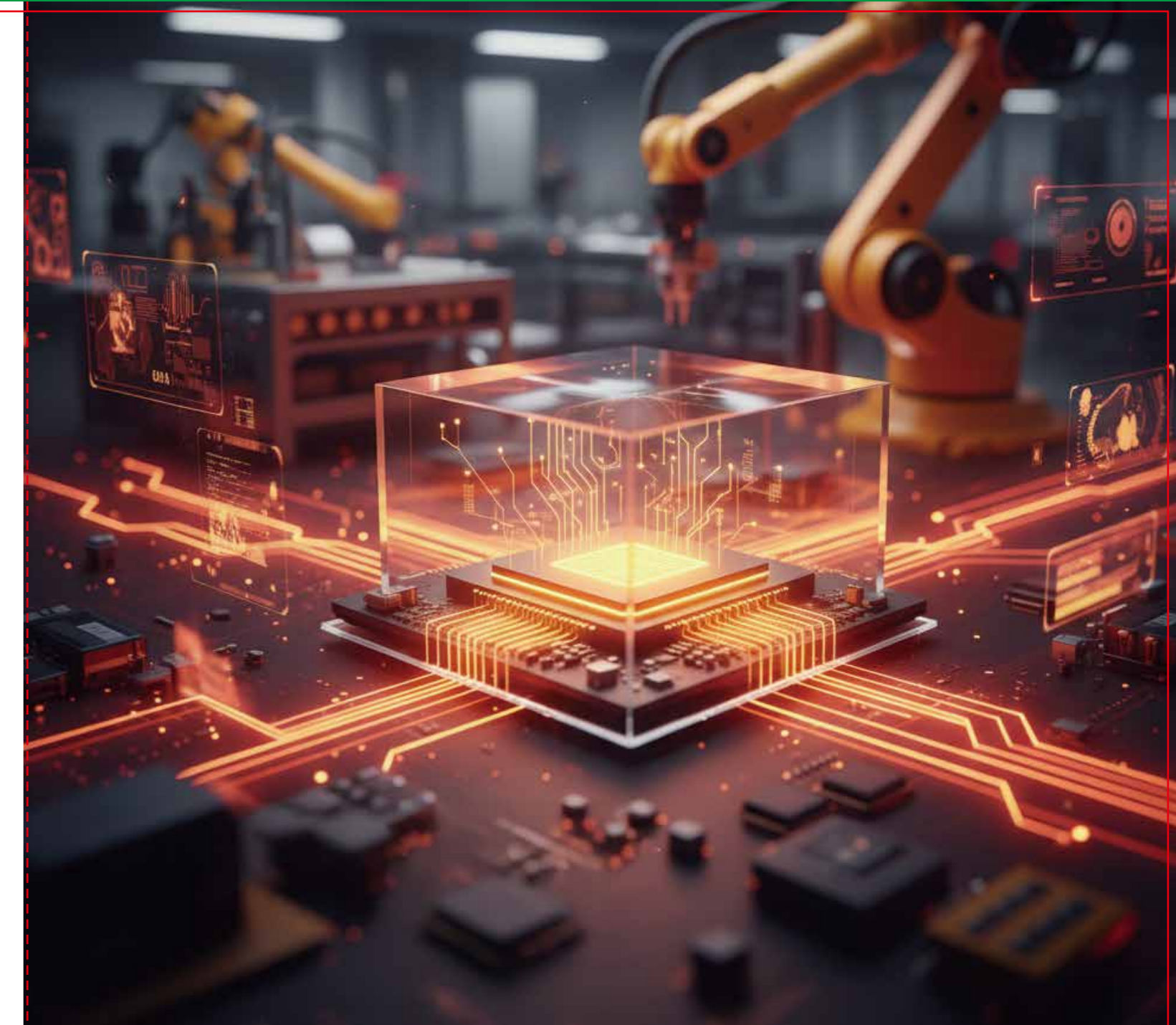


attend.com.tw



E-Brochure

10F-6, No.81, Sec.11, XinTai 5th Rd., XiZhi Dist., New Taipei City, 22101, Taiwan
Copyright © 2019 ATTEND Technology Inc. All rights reserved.



High-Speed and Reliable Edge AI Connection Solution



Innovative Interconnects for Industrial, Automotive & Edge AI Applications

ATTEND delivers next-generation connectivity solutions designed for the rapidly evolving embedded and smart-device ecosystem.

From high-speed data interfaces to rugged interconnects for harsh environments, our products enable reliable performance for industrial automation, smart mobility, edge AI computing, and modern networking systems.

SO-DIMM DDR5 Sockets



DDR5
126A-XXA00
DDR5 SODIMM Socket, Horizontal, STD
126A-XXA10
DDR5 SODIMM Socket, Horizontal, RVS



DDR5
126B-190A00
DDR5 SODIMM Socket, Vertical, STD
126B-190A10
DDR5 SODIMM Socket, Vertical, RVS

Features

- Fully compliant with JEDEC standards
- DDR5 supporting data transfer rate starting from 4800 MT/s and above.
- On-die ECC support enhances data integrity and system reliability
- Multiple form factors available in vertical and right-angle orientations.
- Wide height range from 4 mm to 9.2 mm to fit various system designs.

M.2 (NGFF) Gen5 Connectors



123A-XXB02
M.2 Gen5 Socket B Key, H=4.2mm/8.5mm



123A-XXE02
M.2 Gen5 Socket E Key, H=4.2mm/8.5mm



123A-XXM02
M.2 Gen5 Socket M Key, H=4.2mm/8.5mm

Features

- Height range: 4.2 mm and 8.5 mm
- B, E, and M keying options for module cards
- 0.5 mm pitch featuring sixty-seven contact points
- Supports PCIe 5.0 interface with 32 GT/s per lane

MXM3.0 Connector



125B-78C00
MXM 3.0 Connector, 314 pin,
H=7.8mm, Pitch=0.5mm, 5u"

Features

- Compatible with the MXM 3.0 standard
- Mating area: 0.5 mm pitch, space-saving
- 7.8 mm height, module board mating height 5.0 mm from main board
- Carrier connector 314 pins for SMARC specification
- Ready for M2.5 nut and screw installation
- Excellent signal integrity such as USB, SATA, PCIe, LVDS, eDP, MIPI, and Ethernet

Nano SIM Tray Push-Pull Sockets



115U-A110
Nano SIM Socket, Tray Push-Pull

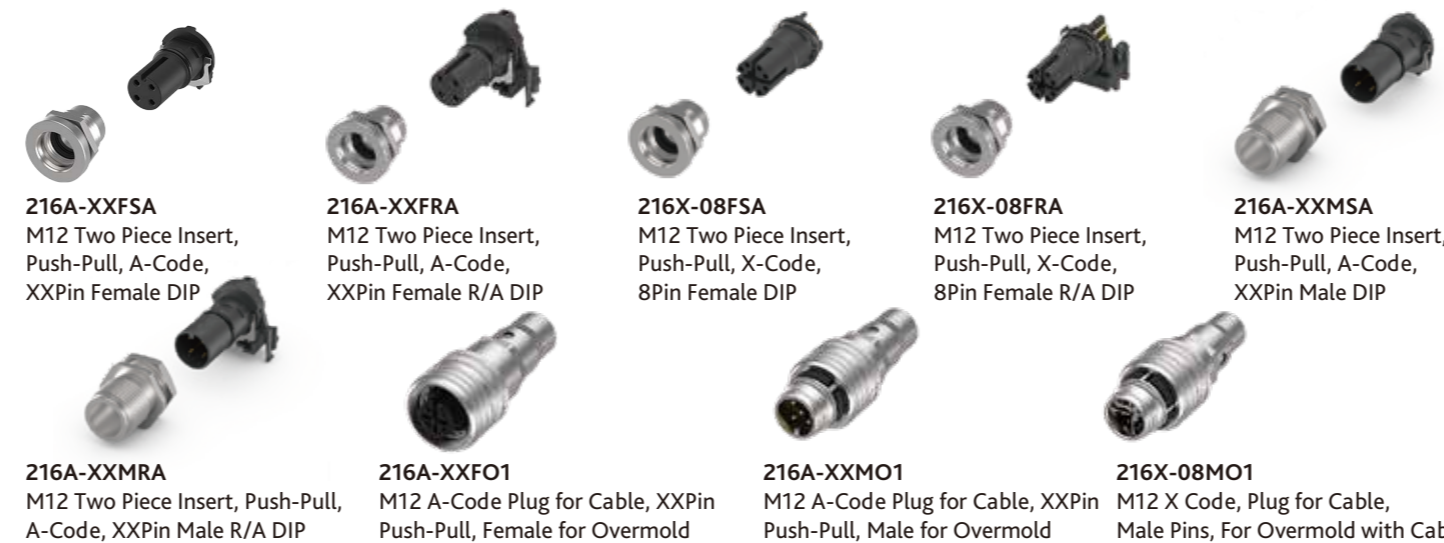
115U-B110
Dual Nano SIM Socket, Tray Push-Pull

115U-B210
Micro SD and Nano SIM Socket, Tray Push-Pull

Features

- Push-Pull Mechanism – Prevents accidental ejection due to vibrations or movement, ensuring secure card retention
- Next-Gen Tray – Features card detection, anti-reverse insertion protection, and a tray lock function for enhanced shock resistance.
- EN 60721-3-5 Certified – Withstands random vibration and Level II shock.
- IP67 Waterproof – Achieves IP67 protection with designated trays.
- Wide Temperature Range – Operates from -40°C to +105°C.

M12 Push-Pull & Two-Piece Type Circular Connectors



216A-XXFSA
M12 Two Piece Insert, Push-Pull, A-Code, XXPin Female DIP

216A-XXFRA
M12 Two Piece Insert, Push-Pull, A-Code, XXPin Female R/A DIP

216X-08FSA
M12 Two Piece Insert, Push-Pull, X-Code, 8Pin Female DIP

216X-08FRA
M12 Two Piece Insert, Push-Pull, X-Code, 8Pin Female R/A DIP

216A-XXMSA
M12 Two Piece Insert, Push-Pull, A-Code, XXPin Male DIP

216A-XXMRA
M12 Two Piece Insert, Push-Pull, A-Code, XXPin Male R/A DIP

216A-XXFO1
M12 A-Code Plug for Cable, XXPin Push-Pull, Female for Overmold

216A-XXMO1
M12 A-Code Plug for Cable, XXPin Push-Pull, Male for Overmold

216X-08MO1
M12 X Code, Plug for Cable, Male Pins, For Overmold with Cable

Features

- Compliant with IEC 61076-2-010 for global standard compatibility.
- Push-Pull locking mechanism enables fast, tool-free mating and unmating.
- The receptacle is intermateable with IEC 61076-2-101 threaded cable plugs.
- Flexible modular design for easy assembly and maintenance
- Multiple coding options to support diverse communication protocols.

SD & MicroSD 4.0 Sockets



104I-TA01
SD 4.0 Socket, UHS-II, Top Mount, Push-Push Type, w/switch/card lock



112L-TDA0
MicroSD 4.0 Card Socket, Push-Push Type, with Switch

Features

- Meet SDA standards for known compatibility and reliability
- Maximum transfer speed up to 624MB/s for UHS-II
- Push Push SMT Type
- Durability 5,000cycle by UHS-II SD Card
- Operating temperature range: -25°C ~ 85°C
- Wide operation temperature range from -40°C to +105°C

Board to Board Floating Connectors



320A-RXXXS00
Board to Board Floating Receptacle, Female, Vertical



320A-PXXXR00
Board to Board Floating Plug, Male, R/A

Features

- The floating design compensates for misalignment in X and Y directions up to ±0.5mm
- Supports high-speed data transmission up to 8GT/s (PCIe 3.0)
- Supports 0.5 mm narrow pitch with 60/80/100 contact options
- Withstands vibration and shock for reliable performance in harsh environments
- Wide operation temperature range from -40°C to +105°C

Waterproof USB C Connectors



217B-BE09
USB4 Gen3 Type C R/A Receptacle, Dual Row SMT 15u", IP68



217D-AB12
USB Type C Receptacle, 16 Pin Dual Row SMT 3u", IP68



217B-BB10
USB Type C Receptacle, 16 Pin Single Row SMT 3u", IP68



217B-CA04
USB Type C Receptacle, 16Pin Single Row, w/SMD, IP68

Features

- IP67 and IP68 waterproof variations are available
- Available in various pin configurations, compatible with data transfer speeds ranging from 480Mbps to 10Gbps.
- Operating temperature range: -40°C to +85°C
- Rated for 10,000 mating cycles
- Design to secure mechanical strength of both receptacle and plug.

FAKRA & Mini FAKRA Connectors



228A-PSX00
FAKRA Plug, Vertical



228A-PXX00
FAKRA Plug, R/A Mid Mount Type



230A-PSX00
Mini FAKRA Plug, Vertical, A Type



230B-PXX00
Mini FAKRA Plug, 1x2, R/A, A Type



230B-PXX01
Mini FAKRA Plug, 1x2, R/A, B Type



230D-PXX00
Mini FAKRA Plug, 2x2, R/A, A Type



230D-PXX01
Mini FAKRA Plug, R/A, 2x2t, B Type

Features

- Frequency Range DC to 6 GHz (standard FAKRA), up to 9 GHz for Mini-FAKRA.
- Meets ISO 20860-1/2, SAE/USCAR-2, and USCAR-17 standards.
- 13 color and mechanical coding options plus 1 neutral variant to prevent mismatching.
- FAKRA and Mini FAKRA cable Assemblies can be customized for different applications to meet specific customer requirements
- Operating Temperature Range: -40°C to +105°C