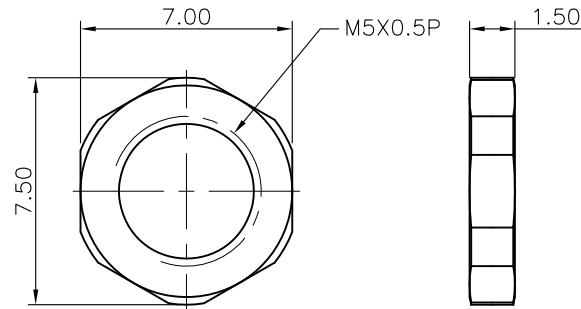
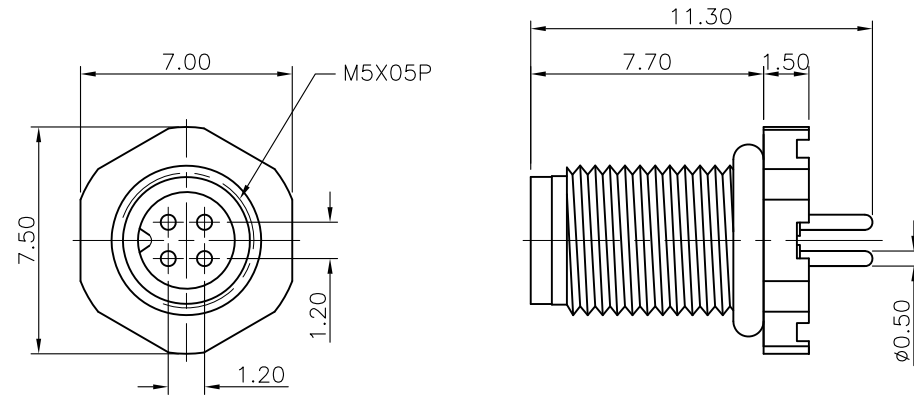


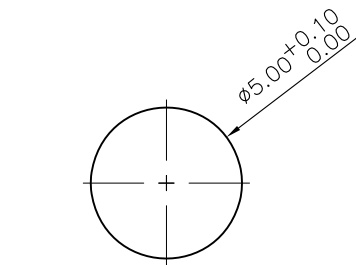
REV.	DESCRIPTION	DRAWN	DATE
1	INITIAL RELEASE	FROS	2015/09/08

# SPECIFICATION:

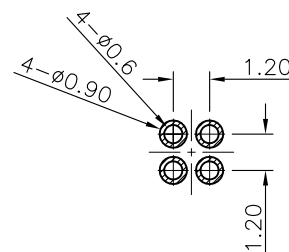
1. CURRENT RATING: 1A
2. VOLTAGE: 60V
3. WATER PROOF: IP67
4. OPERATION TEMPERATURE: -20°C TO +85°C



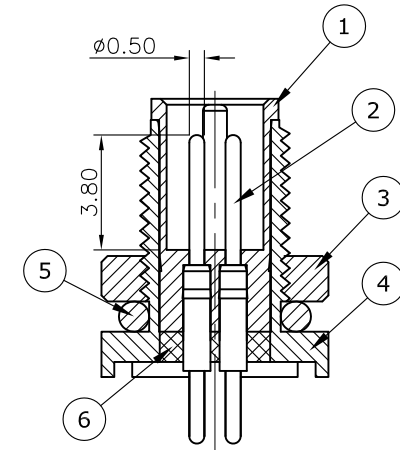
NUT





RECOMMEND PANEL CUT OUT



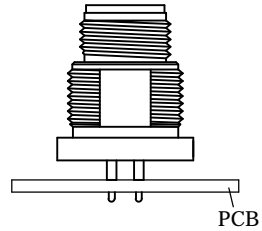
RECOMMEND PCB LAYOUT



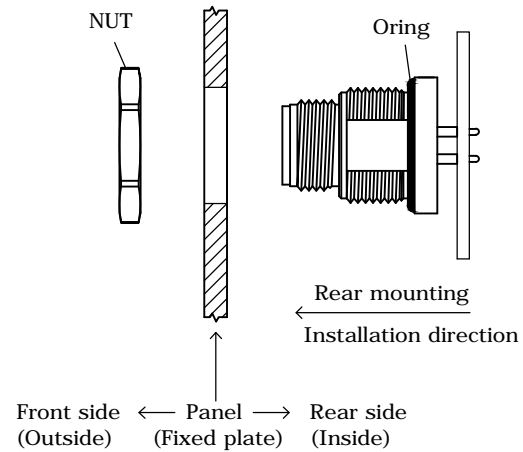
6	EPOXY BASE	EF400A & EF400B, BLACK
5	O-RING	NBR, BLACK
4	SHELL	BRASS, NICKEL PLATED
3	NUT	BRASS, NICKEL PLATED
2	CONTACT	BRASS, GOLD PLATED UNDER NICKEL
1	HOUSING	PBT, UL94V-0, BLACK
NO	PART NAME	DESCRIPTION

UNLESS OTHERWISE SPECIFIED TOLERANCE				 <b>ATTEND</b>  WWW.ATTEND.COM.TW	
UNIT:  mm	DECIMAL	LINEAR	ANGLES		
	X.	±0.50	±5°		
	X.X	±0.25	±3°		
	X.XX	±0.12	±1°		
DRAWN	Tim	2016/08/18	DRAWN NAME: M5 A-Code Receptacle, 4Pin Male Straight PCB Type, Front Fastened		
CHECKED	Fros	2016/08/18			
APPROVED	Ken	2016/08/18	PRODUCT NO.	220A-04MSF	
	SCALE 4/1	SHEET 1/1	SIZE A4	FILE NAME	220A-04MSF_B_1

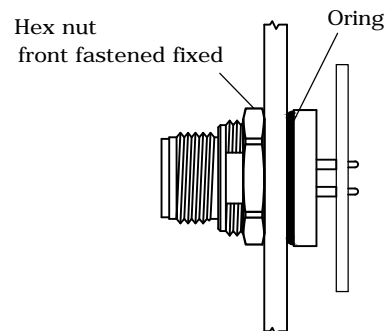
## 1. Soldering Board


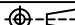


## 2. Installation Direction



## 3. Connector Mated to Panel Mount



UNLESS OTHERWISE SPECIFIED TOLERANCE					 <b>ATTEND</b>		
UNIT:  mm	DECIMAL	LINEAR	ANGLES	WWW.ATTEND.COM.TW			
	X.	±0.50	±5°				
	X.X	±0.25	±3°				
	X.XX	±0.12	±1°				
DRAWN	Tim	2025/02/25	DRAWN NAME:				
CHECKED	Fros	2025/02/25	M Series For Male DIP Type Front Fastened Design Guide				
APPROVED	Ken	2025/02/25 <th>PRODUCT NO.</th> <th colspan="2"></th>	PRODUCT NO.				
	SCALE	SHEET 1/1	SIZE A4	FILE NAME	M Series MSF_DG		