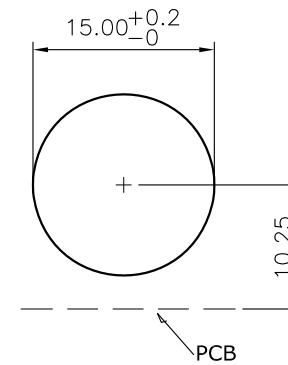
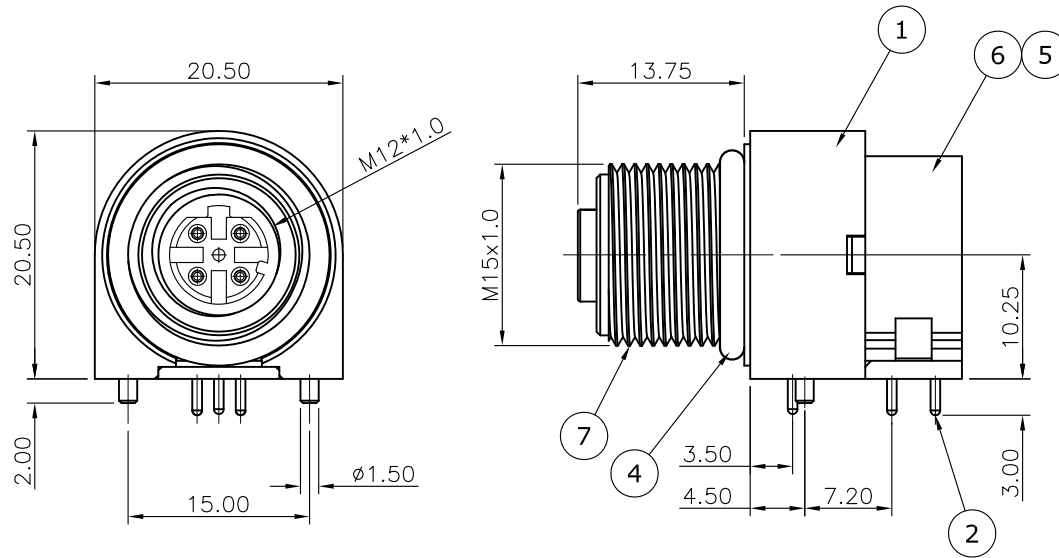


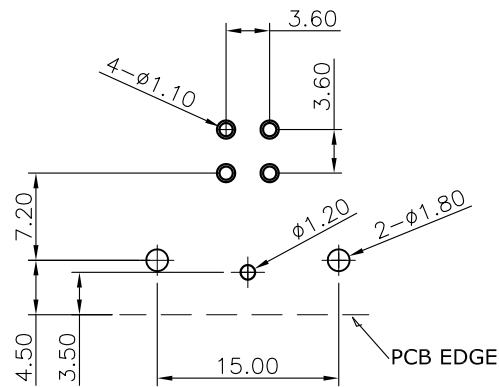
REV.	DESCRIPTION	DRAWN	DATE
1	INITIAL RELEASE	FROS	2018/11/19

NOTE:

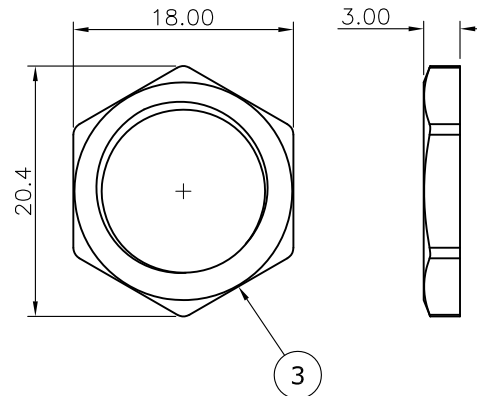
1. Current Rating: 4A
2. Voltage Rating: 250V
3. Water Proof: IPX7
4. Operation temperature: -40°C~85°C



PANEL CUT OUT



RECOMMENDED LAYOUT
GENERAL TOLERANCE: $\pm 0.05\text{mm}$



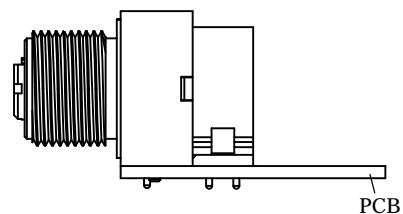
7	Shell	Brass, Nickel plating
6	Base	PBT UL94V-0, Black
5	Back Housing	PBT UL94V-0, Black
4	O-Ring	NBR, Black
3	Nut	Brass
2	Contact	Brass, Gold Flash under Nickel plating
1	Cover	PBT UL94V-0, Black
NO.	PART NAME	DESCRIPTION

UNLESS OTHERWISE SPECIFIED TOLERANCE			
UNIT:	DECIMAL	LINEAR	ANGLES
mm	X.	± 0.50	$\pm 5^\circ$
	X.X	± 0.25	$\pm 3^\circ$
	X.XX	± 0.12	$\pm 1^\circ$
DRAWN	Fros	2018/11/19	DRAWN NAME: M12 D- Code Receptacle, 4Pin Female R/A DIP Type Front Fastened
CHECKED	Tim	2018/11/19	
APPROVED	Ken	2018/11/19	
SCALE		SHEET	SIZE
1.6/1		1/1	A4
FILE NAME		216D-04FRF_B_1	

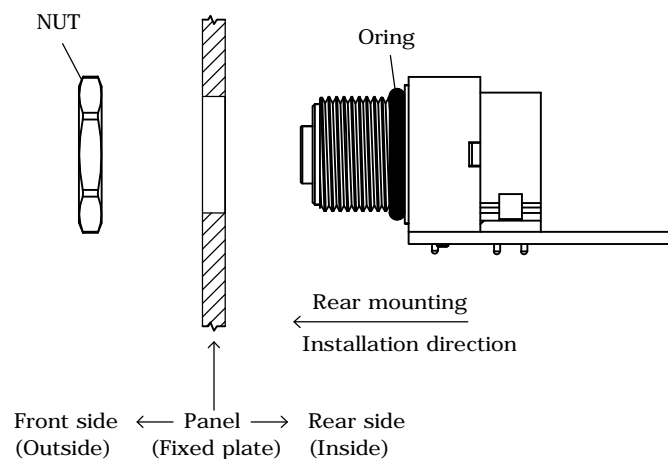


www.attend.com.tw

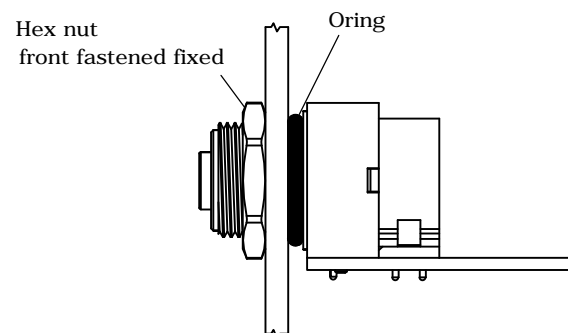
1. Soldering Board


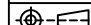


2. Installation Direction



3. Connector Mated to Panel Mount



UNLESS OTHERWISE SPECIFIED TOLERANCE				 ATTEND	
UNIT:	DECIMAL	LINEAR	ANGLES		
mm	X.	±0.50	±5°	WWW.ATTEND.COM.TW	
	X.X	±0.25	±3°		
	X.XX	±0.12	±1°		
DRAWN	Tim	2025/02/25	DRAWN NAME:		
CHECKED	Fros	2025/02/25	M Series For Female R/A DIP Front Fastened		
APPROVED	Ken	2025/02/25	Design Guide		
	SCALE	SHEET 1/1	SIZE A4	PRODUCT NO.	
				FILE NAME	M Series FRF_DG