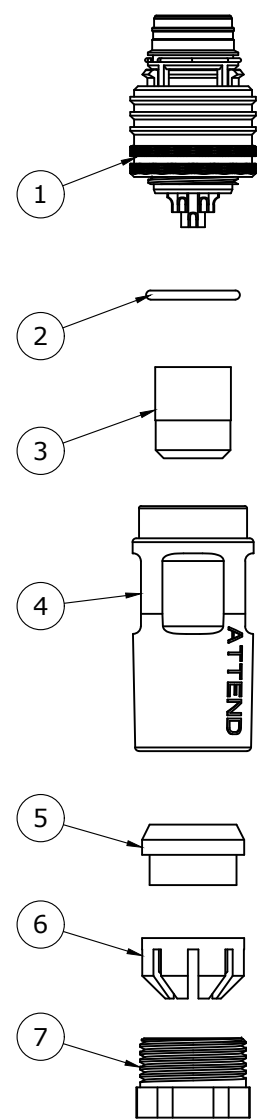
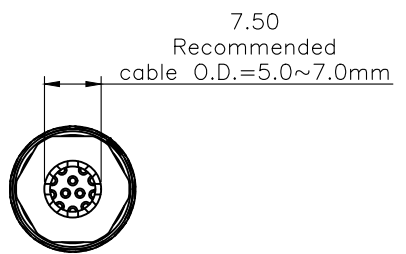
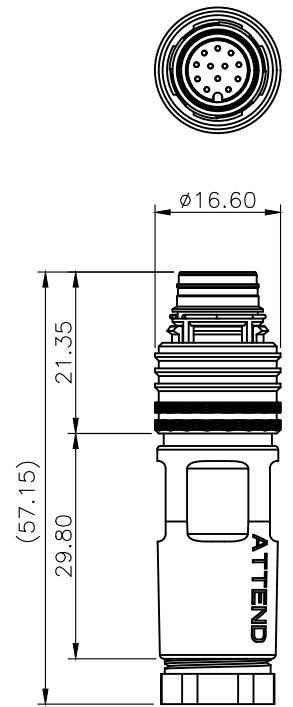


REV.	DESCRIPTION	DRAWN	DATE
1	INITIAL RELEASE	FROS	2025/12/29



Note:

- CONN.  
Housing: PA, UL94-V0 black  
Contact: Brass, G/F plated over nickel  
Shell: Zinc alloy, nickel plated over all  
Locking: PC, black  
Locking Ring: Brass, nickel plated over all  
Spring 1 & 2: Stainless steel
- Rated current (40°C): 1.5A
- Rated voltage: 30V
- Waterproof: IP67
- Operation temperature: -40°C to 85°C

7	GLAND NUT	Zinc alloy
6	GLAND CAGE	POM, white
5	GLAND	Silicone, black
4	BODY	Zinc alloy
3	SHIELD	NBR, black
2	ORING	NBR, black
1	CONN.	See Note

NO.		PART NAME	DESCRIPTION
UNLESS OTHERWISE SPECIFIED TOLERANCE			
UNIT:	DECIMAL	LINEAR	ANGLES
	X.	±0.50	±5°
	X.X	±0.25	±3°
	X.XX	±0.12	±1°
DRAWN			Fros 2025/12/29
CHECKED			Tim 2025/12/29
APPROVED			Ken 2025/12/29
SCALE		SHEET	SIZE
1/1		1/1	A4
DRAWN NAME:			M12 A-Code 12 PIN Plug for Cable, Push-Pull, Male for Field Installable, G/F
PRODUCT NO.		216A-12MF2	
FILE NAME		216A-12MF2_B_1	



www.attend.com.tw