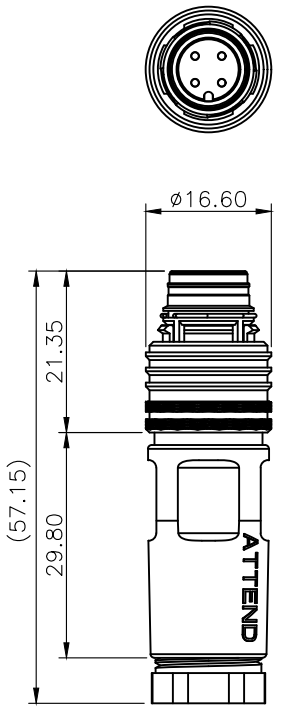
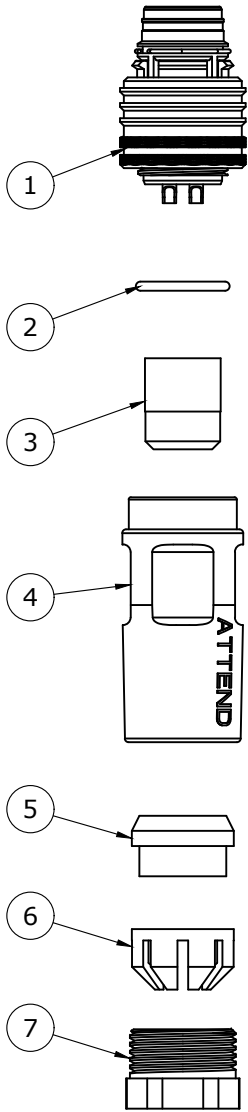
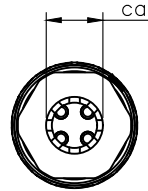


REV.	DESCRIPTION	DRAWN	DATE
1	INITIAL RELEASE	FROS	2025/12/29




7.50
Recommended
cable O.D.=5.0~7.0mm



Note:

- CONN.
Housing: PA, UL94-V0 black
Contact: Brass, G/F plated over nickel
Shell: Zinc alloy, nickel plated over all
Locking: PC, black
Locking Ring: Brass, nickel plated over all
Spring 1 & 2: Stainless steel
- Rated current (40°C): 4A
- Rated voltage: 250V
- Waterproof: IP67
- Operation temperature: -40°C to 85°C

7	GLAND NUT	Zinc alloy
6	GLAND CAGE	POM, white
5	GLAND	Silicone, black
4	BODY	Zinc alloy
3	SHIELD	NBR, black
2	ORING	NBR, black
1	CONN.	See Note

NO.		PART NAME	DESCRIPTION
UNLESS OTHERWISE SPECIFIED TOLERANCE			
UNIT:	DECIMAL	LINEAR	ANGLES
	mm	X. ±0.50	X.X ±5°
		X.X ±0.25	X.XX ±3°
		X.XX ±0.12	X ±1°
DRAWN	Fros	2025/12/29	 www.attend.com.tw DRAWN NAME: M12 A-Code 4 PIN Plug for Cable, Push-Pull, Male for Field Installable, G/F
CHECKED	Tim	2025/12/29	
APPROVED	Ken	2025/12/29	
SCALE		SHEET	SIZE
1/1		1/1	A4
FILE NAME		216A-04MF2_B_1	