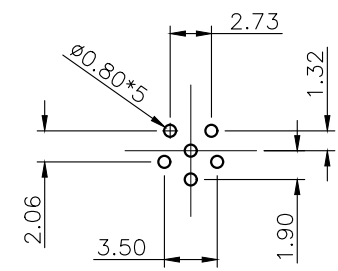
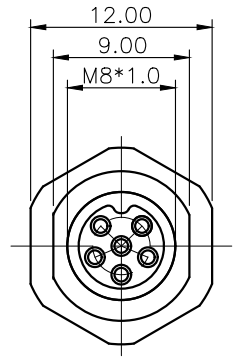
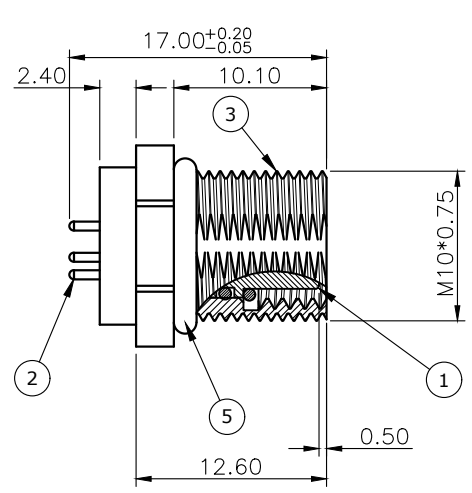


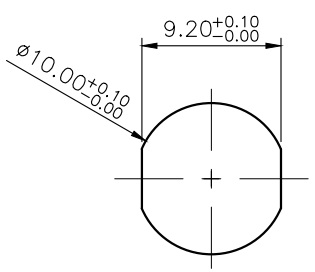
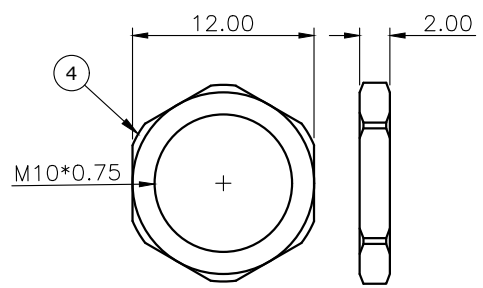
REV.	DESCRIPTION	DRAWN	DATE
1	INITIAL RELEASE	Fros	2026/04/30

SPECIFICATION:

- 1. ELECTRICAL
 - 1.1 Current Rating: 1.5A
 - 1.2 Voltage Rating: 30V
 - 1.3 Water Proof: IP67
 - 1.4 Operating Temperature: -40°C~+105°C



RECOMMEND LAYOUT



RECOMMEND PANEL CUT OUT

6	EPOXY BASE	
5	O-RING	EPDM, black
4	NUT	Brass, nickel plating
3	SHELL	Brass, nickel plating
2	CONTACT	Brass, gold flash plating under nickel
1	HOUSING	PA66, black

NO.	PART NAME	DESCRIPTION		
UNLESS OTHERWISE SPECIFIED TOLERANCE				
UNIT:	DECIMAL	LINEAR	ANGLES	
mm	X.	±0.50	±5°	
	X.X	±0.25	±3°	
	X.XX	±0.12	±1°	
WWW.ATTEND.COM.TW				
DRAWN	Fros	2026/04/30	DRAWN NAME: M8 A-Code Receptacle, 6Pin Female Straight PCB Type, Front Fastened	
CHECKED	Tim	2026/04/30		
APPROVED	Ken	2026/04/30	PRODUCT NO. 219A-06FSF	
	SCALE	2/1	FILE NAME	219A-06FSF_B_1
	SHEET	1/1	SIZE	A4

