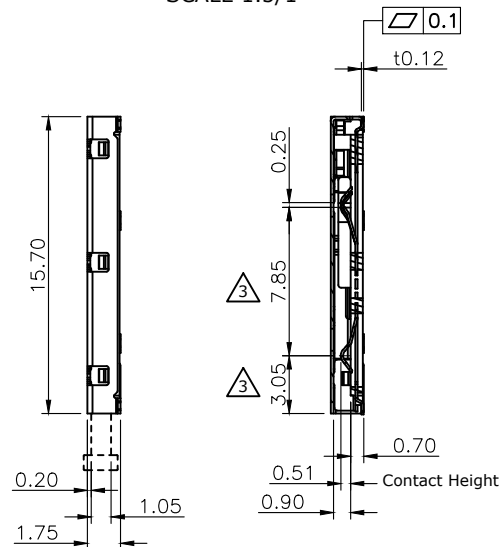


SCALE 1.5/1



Section A-A

REV.	DESCRIPTION	DRAWN	DATE
1	INITIAL RELEASE	FROS	2019/04/15
2	ECR2300001	TIM	2023/01/04
3	The rear terminal blocks are moved backward	Fros	2026/03/17

SPECIFICATION:

1. ELECTRICAL

- 1.1 Current Rating: 0.5A max.
- 1.2 Voltage Rating: 10VAC/DC
- 1.3 Contact Resistance: 50mΩ
- 1.4 Insulation Resistance: 1000MΩ
- 1.5 Dielectric Withstanding Voltage: 500VAC

2. MECHANICAL

- 2.1 Durability: 2,000 Cycles
- 2.2 Tray Insertion Force: 10N max.
- 2.3 Tray Extraction Force: 3N min.
- 2.4 Contact Normal Force: 20gf min. per pin

3. ENVIRONMENTAL

- 3.1 Operating temperature range: -40°C~+105°C
- 3.2 Storage temperature range: -40°C~+105°C

4. SOLDER ABILITY

- 4.1 Recommended IR-Reflow Temperature: 260°C

Date code: YWWD  
 Y=year 0~9  
 WW=Week 1~52  
 D=1~7

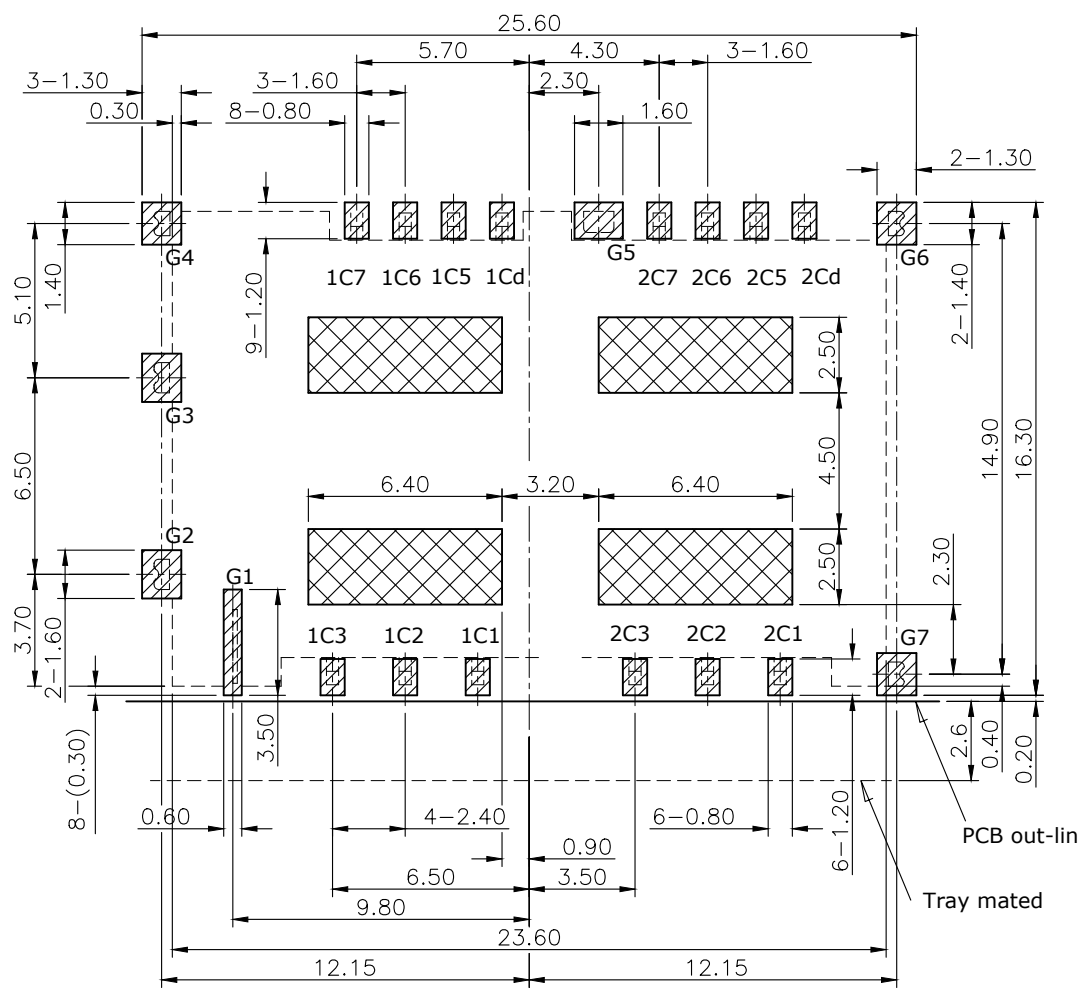
5	CAM	Stainless Steel 0.4t
4	BAR	Stainless Steel 0.25t
3	SHELL	Stainless Steel 0.15t, solder area: Gold flash, under plating 12u" Nickel
2	CONTACT	Copper alloy 0.12t, contact area:30u" Gold plating solder area: Gold flash, under plating 50u" Nickel
1	HOUSING	LCP, UL94V-0, black

NO. PART NAME		DESCRIPTION	
UNLESS OTHERWISE SPECIFIED TOLERANCE			
UNIT:	DECIMAL	LINEAR	ANGLES
	mm	X. ±0.50	±5°
		X.X ±0.25	±3°
		X.XX ±0.12	±1°
DRAWN		Fros	2018/10/23
CHECKED		Tim	2018/10/23
APPROVED		Ken	2018/10/23
SCALE		SHEET	SIZE
2.5/1		1/3	A4
DRAWN NAME:		NANO SIM SOCKET, DUAL CARD TRAY EJECT TYPE, 30U"	
PRODUCT NO.		115S-BS00	
FILE NAME		115S-BS00_B_3	



www.attend.com.tw

REV.	DESCRIPTION	DRAWN	DATE
	see sheet one		



- Socket
- Solder PAD
- NO pattern area

**Pin assignment**

Pin no.		Description
1C1	2C1	Vcc
1C2	2C2	RST
1C3	2C3	CLK
1Cd	2Cd	Detect
1C5	2C5	GND
1C6	2C6	Vpp
1C7	2C7	I/O

**RECOMMENDED LAYOUT (TOP VIEW)**  
**GENERAL TOLERANCE: ±0.05mm**

UNLESS OTHERWISE SPECIFIED TOLERANCE

UNIT:	DECIMAL	LINEAR	ANGLES
mm	X.	±0.50	±5°
	X.X	±0.25	±3°
	X.XX	±0.12	±1°



www.attend.com.tw

DRAWN	Fros	2018/10/23	DRAWN NAME: Nano SIM Socket, Dual Card Tray Eject Type, 30u"	
CHECKED	Tim	2018/10/23		
APPROVED	Ken	2018/10/23	PRODUCT NO. 115S-BS00	
	SCALE 4/1	SHEET 2/3	SIZE A4	FILE NAME 115S-BS00_B_2

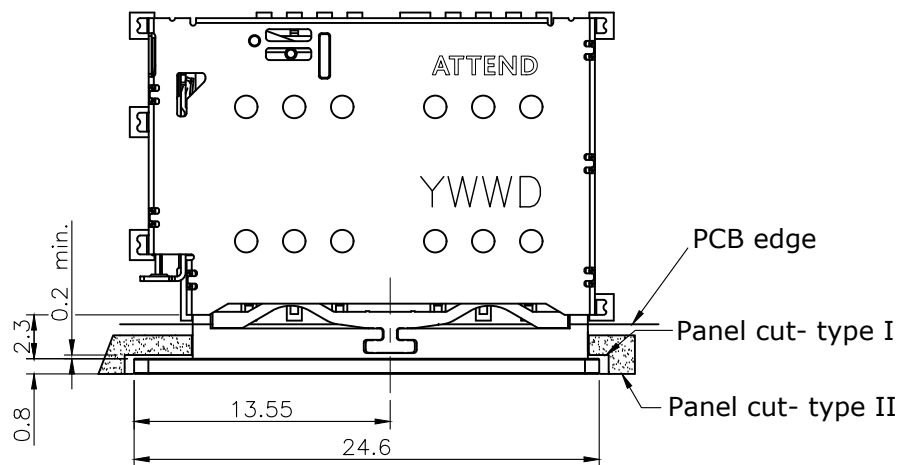
REV.	DESCRIPTION	DRAWN	DATE
	see sheet one		

**Recommendation:**

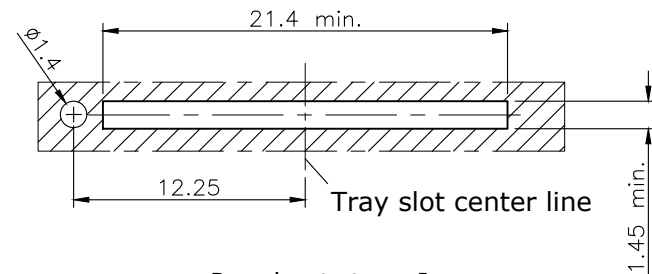
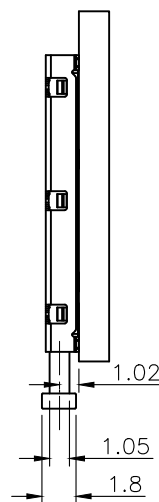
Suggested panel cut (Type I/II) can lead the push bar to touch and press precisely lever. If the design does not follow this instruction, a track for the push bar should be considered for the designer to prevent the deviation of the entry of the push bar.

**Tray ejecting types notes:**

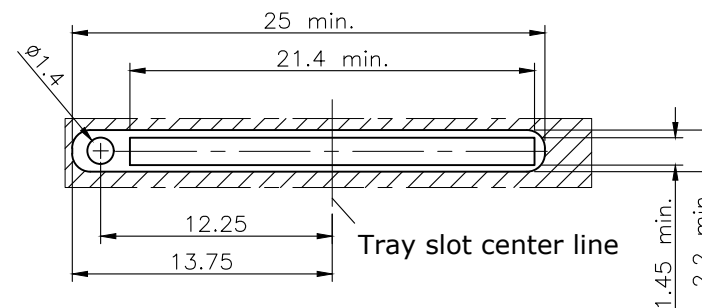
1. Pull out the door/ tray directly
2. Push the BAR PUSH linkage mechanism



RECOMMEND PANEL CUT OUT



Panel cut- type I



Panel cut- type II

UNLESS OTHERWISE SPECIFIED TOLERANCE

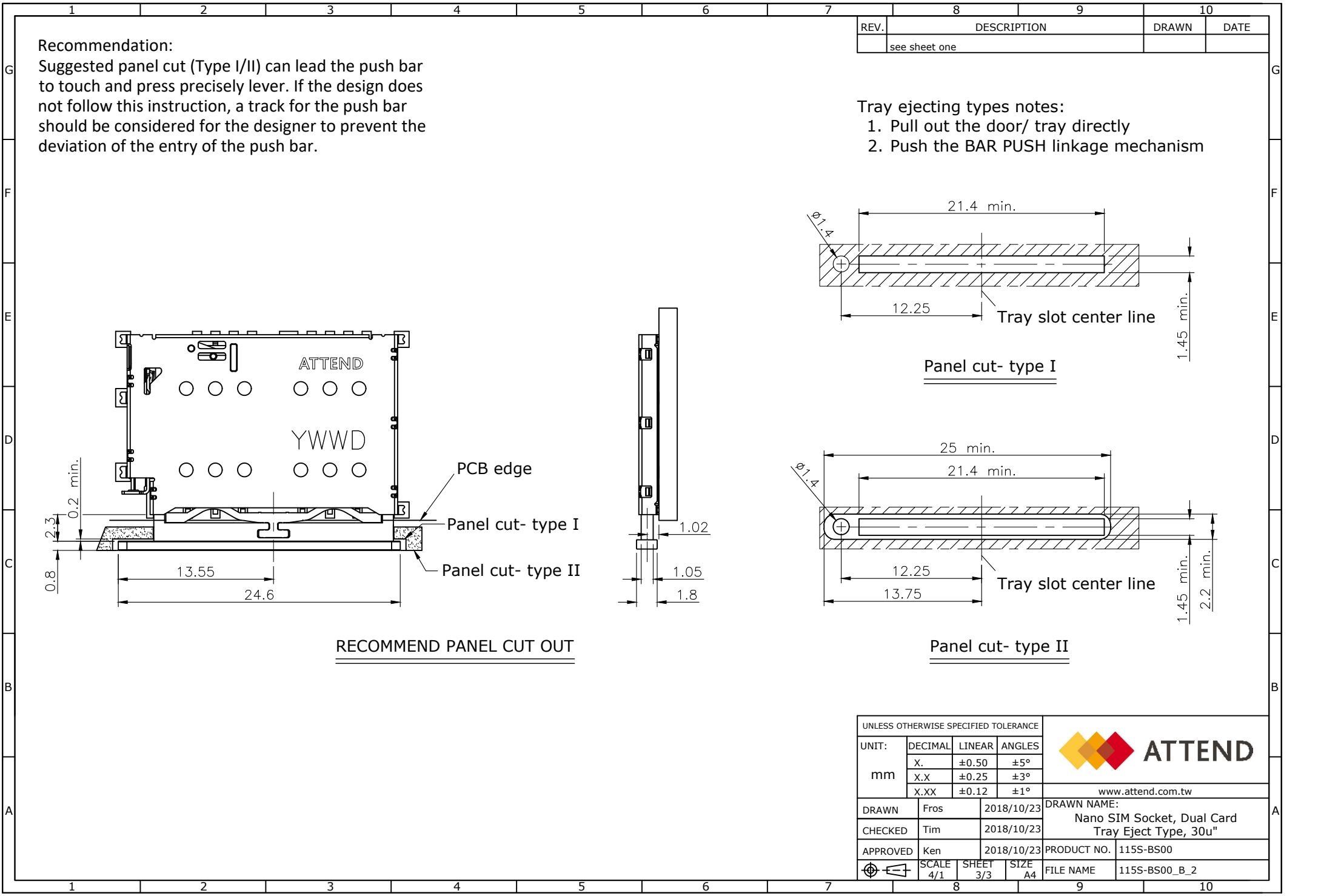
UNIT:	DECIMAL	LINEAR	ANGLES
mm	X.	±0.50	±5°
	X.X	±0.25	±3°
	X.XX	±0.12	±1°



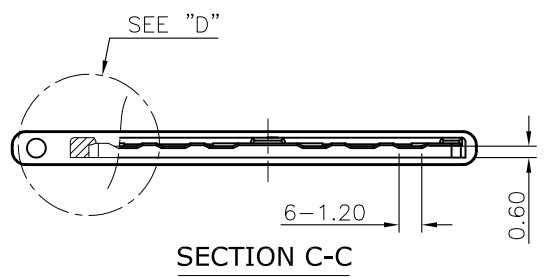
www.attend.com.tw

DRAWN	Fros	2018/10/23
CHECKED	Tim	2018/10/23
APPROVED	Ken	2018/10/23
SCALE	4/1	SHEET 3/3
SIZE	A4	

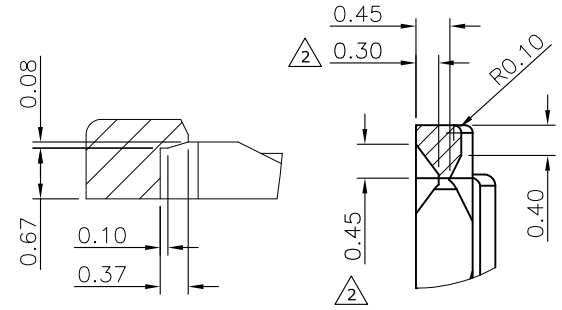
DRAWN NAME:	Nano SIM Socket, Dual Card Tray Eject Type, 30u"
PRODUCT NO.	115S-BS00
FILE NAME	115S-BS00_B_2



REV.	DESCRIPTION	DRAWN	DATE
3	ECR2400001	FROS	2024/02/29
4	ECR2400004	TIM	2024/09/03
5	ECR2400006	Fros	2024/11/28

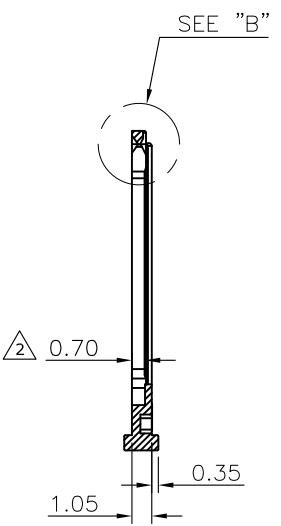
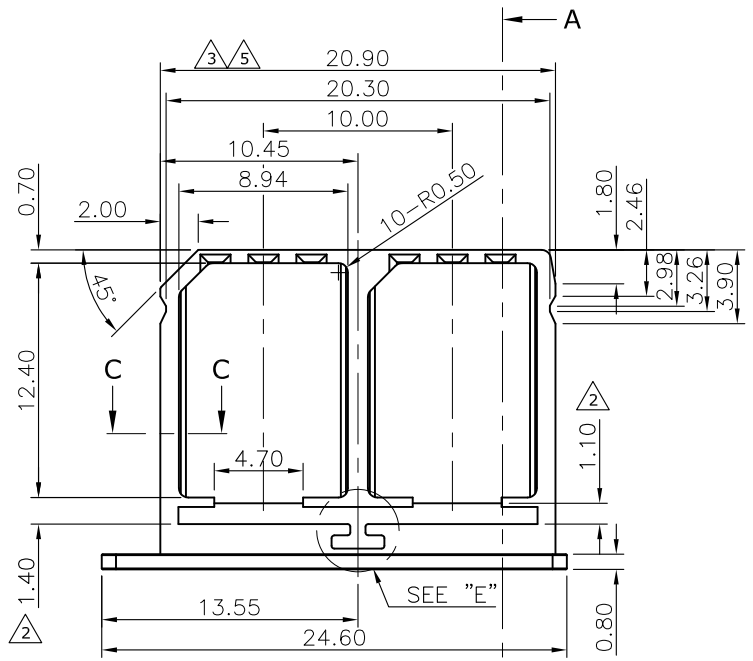
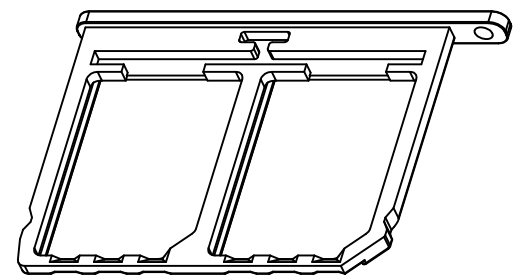


**SECTION C-C**

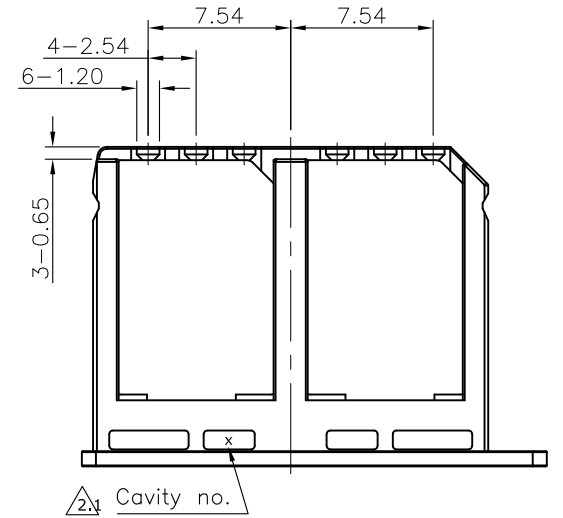


**DETAIL D  
Scale 10/1**

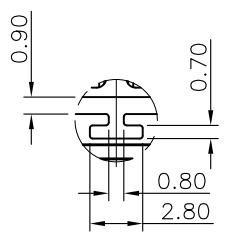
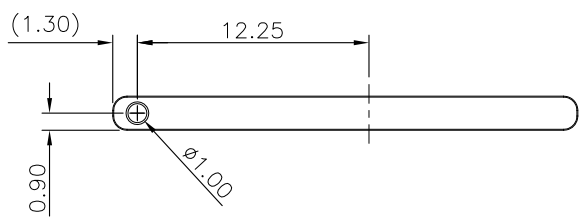
**DETAIL B  
Scale 10/1**



**SECTION A-A**



**Cavity no.**



**DETAIL E**

1	Tray	Stainless steel	
NO. PART NAME		DESCRIPTION	
UNLESS OTHERWISE SPECIFIED TOLERANCE			
UNIT:	DECIMAL	LINEAR	ANGLES
mm	X.	±0.50	±5°
	X.X	±0.25	±3°
	X.XX	±0.12	±1°
DRAWN		Fros	2018/10/23
CHECKED		Tim	2018/10/23
APPROVED		Ken	2018/10/23
SCALE		SHEET	SIZE
2.5	1/1	A4	
DRAWN NAME:		www.attend.com.tw	
PRODUCT NO.		115S-BT00	
FILE NAME		115S-BT00_B_5	

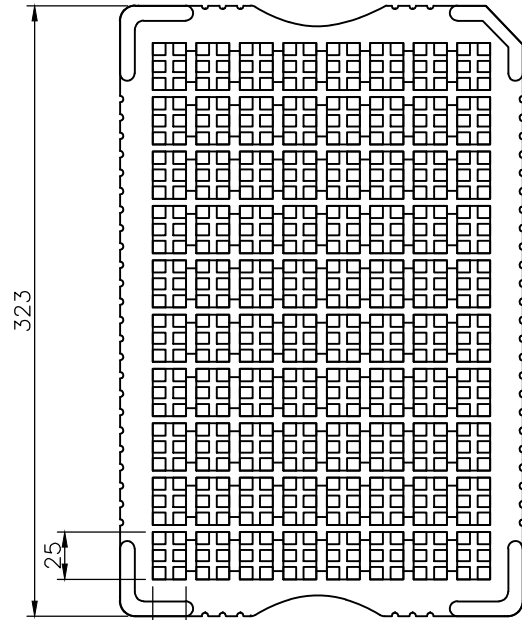


Nano SIM Tray, Dual Card, SUS316  
Natural color, 16.9mm, Tray

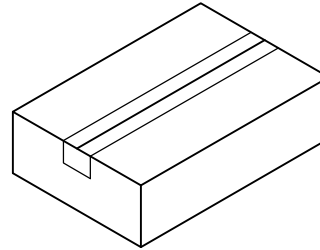
REV.	DESCRIPTION	DRAWN	DATE
1	INITIAL RELEASE	FROS	2024/05/14
2	ECR2400004	TIM	2024/09/03
3	ECR241231001	TIM	2024/12/31

**PACKAGING SPECIFICATION:**

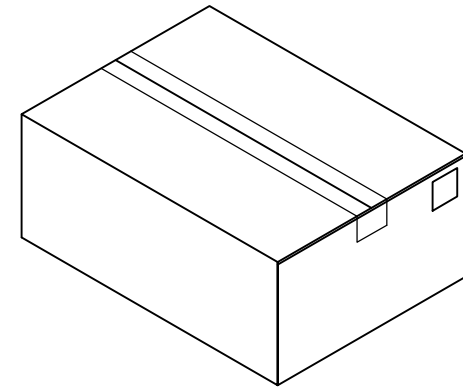
△<sub>3</sub> Quantity:  
 80 Piece/ Tray  
 1200 PCS/ INNER BOX  
 4800 PCS/ CARTON



80PCS / Tray



△<sub>3</sub> 15 Tray / Inner Box  
 Inner Box L\*W\*H= 335\*225\*100



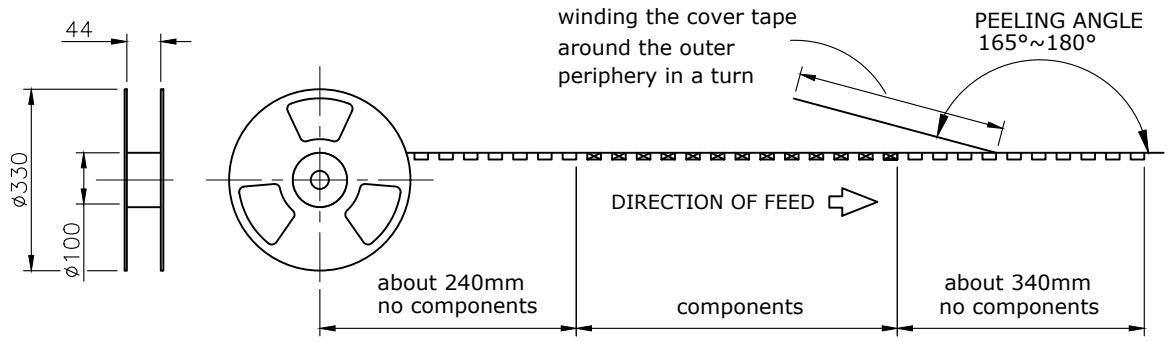
4 Inner Box / Carton  
 Carton L\*W\*H=480\*360\*230

1	Tray	PET, Transparent	
NO.	PART NAME	DESCRIPTION	
UNLESS OTHERWISE SPECIFIED TOLERANCE			
UNIT:	DECIMAL	LINEAR	ANGLES
mm	X.	±0.50	±5°
	X.X	±0.25	±3°
	X.XX	±0.12	±1°
DRAWN		Fros	2024/05/14
CHECKED		Tim	2024/05/14
APPROVED		Ken	2024/05/14
SCALE		NA	SIZE A4
SHEET		1/1	FILE NAME
DRAWN NAME:		Tray Package	
PRODUCT NO.		115S-BTOXX	
FILE NAME		115S-BTOXX_D_3	



www.attend.com.tw

REV.	DESCRIPTION	DRAWN	DATE
	see sheet one		



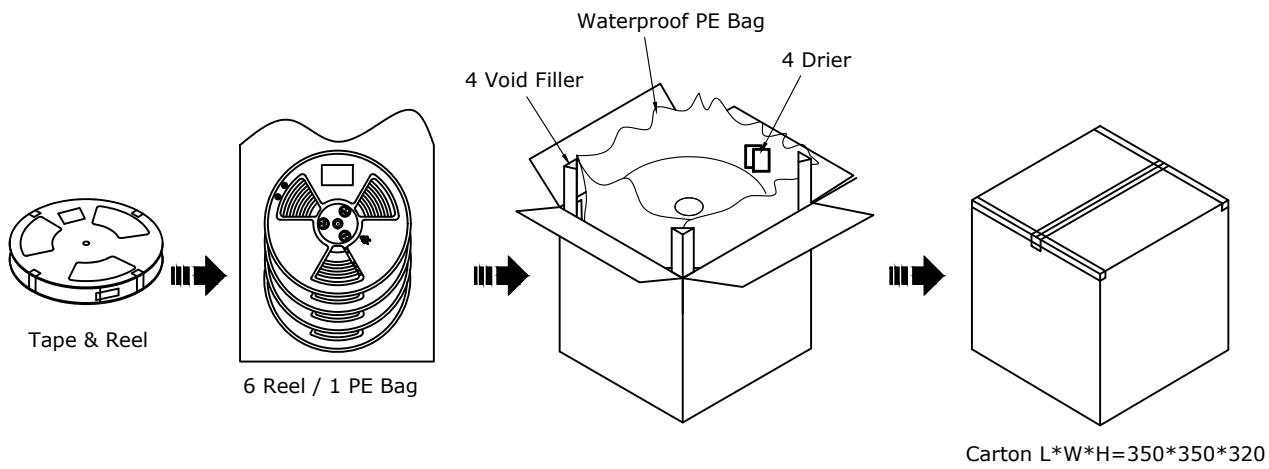
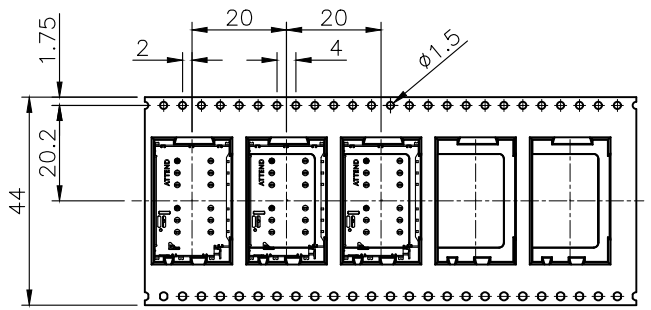
## PACKAGING SPECIFICATION:

### 1. MATERIAL

- 1.1 Embossed Carrier Tape: PS Black
- 1.2 Top Cover Tape: PET  
20-80g(Peel Speed 300mm/Minute)
- 1.3 Taping Reel: Plastic

### 2. PACKING

- 2.1 Quantity:  
1,200 PCS/REEL  
6 REEL/Carton  
7,200 PCS/Carton



UNLESS OTHERWISE SPECIFIED TOLERANCE

UNIT:	DECIMAL	LINEAR	ANGLES
mm	X.	±0.50	±5°
	X.X	±0.25	±3°
	X.XX	±0.12	±1°



www.attend.com.tw

DRAWN	Fros	2018/10/23	DRAWN NAME: Nano SIM Socket, Dual Card Tray Eject Type, 30u"				
CHECKED	Tim	2018/10/23					
APPROVED	Ken	2018/10/23					
SCALE	N/A	SHEET	1/1	SIZE	A4	PRODUCT NO.	115S-BS00
						FILE NAME	115S-BS00_D_1

Carton L\*W\*H=350\*350\*320