

REV.	DESCRIPTION	DRAWN	DATE
1	INITIAL RELEASE	TIM	2018/09/10
2	ECR260417001	Fros	2026/04/17

SPECIFICATION:

1. ELECTRICAL

- 1.1 Current Rating: 5A for Vbus;
1.25A for Vconn & GND;
0.25A for other pin
- 1.2 Voltage Rating: 20V AC/DC max
- 1.3 Contact Resistance: 40mΩ
- 1.4 Insulation Resistance: 100MΩ
- 1.5 Dielectric Withstanding Voltage: 100VAC

2. MECHANICAL

- 2.1 Durability: 10,000 cycles
- 2.2 Insertion Force: 5 to 20N
- 2.3 Extraction Force: 8 to 20N

3. ENVIRONMENTAL

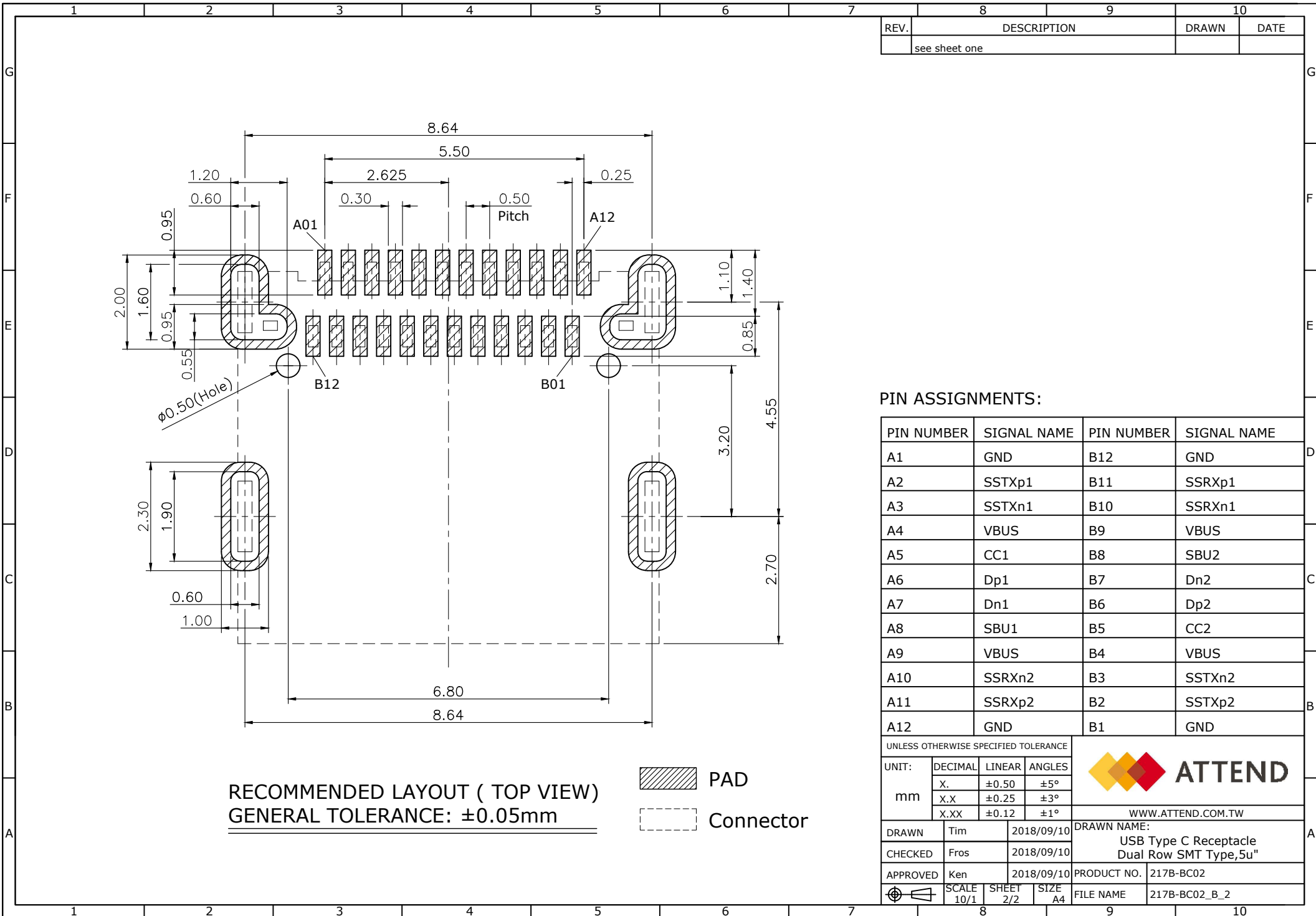
- 3.1 Operating temperature range: -40°C~+85°C
- 3.2 Storage temperature range: -40°C~+85°C

4	SHIELD	Stainless Steel, T=0.15mm
3	SHELL	SUS304, T=0.30mm, 100u" Nickel
2	CONTACT	Copper Alloy, 5u" Gold plating on contact area Tin plating on solder tail, under plated Nickel
1	HOUSING	LCP, UL94V-0, Black

NO.		PART NAME	DESCRIPTION
UNLESS OTHERWISE SPECIFIED TOLERANCE			
UNIT:	DECIMAL	LINEAR	ANGLES
	mm	X. ±0.50	X.X ±5°
		X.XX ±0.25	X.X ±3°
		X.XXX ±0.12	X.X ±1°
DRAWN			Tim
CHECKED			Fros
APPROVED			Ken
SCALE			4/1
SHEET			1/2
SIZE			A4
DRAWN NAME:			USB Type C Receptacle Dual Row SMT Type, 5u"
PRODUCT NO.			217B-BC02
FILE NAME			217B-BC02_B_2



WWW.ATTEND.COM.TW



REV.	DESCRIPTION	DRAWN	DATE
	see sheet one		

PIN ASSIGNMENTS:

PIN NUMBER	SIGNAL NAME	PIN NUMBER	SIGNAL NAME
A1	GND	B12	GND
A2	SSTXp1	B11	SSRXp1
A3	SSTXn1	B10	SSRXn1
A4	VBUS	B9	VBUS
A5	CC1	B8	SBU2
A6	Dp1	B7	Dn2
A7	Dn1	B6	Dp2
A8	SBU1	B5	CC2
A9	VBUS	B4	VBUS
A10	SSRXn2	B3	SSTXn2
A11	SSRXp2	B2	SSTXp2
A12	GND	B1	GND

UNLESS OTHERWISE SPECIFIED TOLERANCE

UNIT:	DECIMAL	LINEAR	ANGLES
mm	X.	±0.50	±5°
	X.X	±0.25	±3°
	X.XX	±0.12	±1°

ATTEND
 WWW.ATTEND.COM.TW

DRAWN	Tim	2018/09/10	DRAWN NAME: USB Type C Receptacle Dual Row SMT Type,5u"
CHECKED	Fros	2018/09/10	
APPROVED	Ken	2018/09/10	
SCALE		10/1	PRODUCT NO. 217B-BC02
SHEET		2/2	FILE NAME 217B-BC02_B_2
SIZE		A4	