

REV.	DESCRIPTION	DRAWN	DATE
1	INITIAL RELEASE	FROS	2024/09/05

**SPECIFICATION:**

**1. ELECTRICAL**

- 1.1 Current Rating: 1A (power pin)
- 1.2 Voltage Rating: 50VAC
- 1.3 Contact Resistance: 55mΩ, Δ20mΩ MAX.
- 1.4 Insulation Resistance: 500MΩ
- 1.5 Dielectric Withstanding Voltage: 300VAC

**2. MECHANICAL**

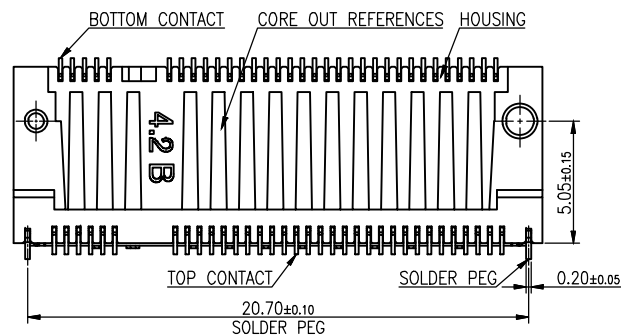
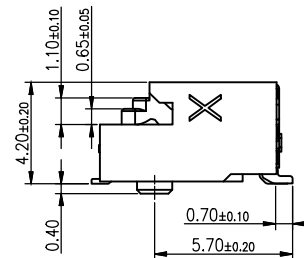
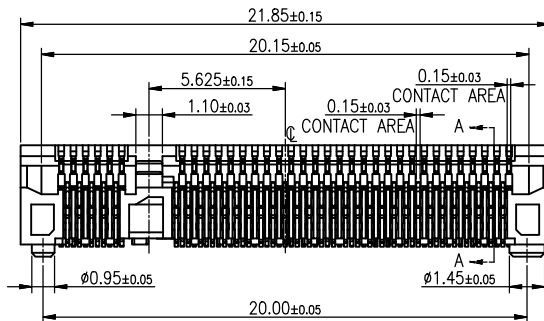
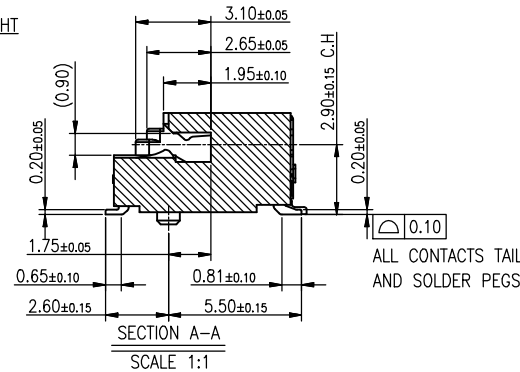
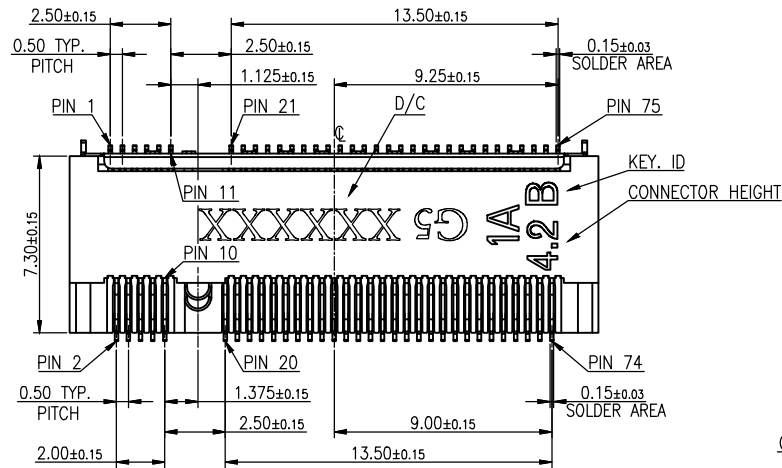
- 2.1 Durability: 60 Cycle
- 2.2 Mating Force: 25N max.
- 2.3 Un-mating Force: 25N max.

**3. ENVIRONMENTAL**

- 3.1 Operating temperature range: -40°C~+85°C
- 3.2 Storage temperature range: -40°C~+85°C

**4. SOLDER ABILITY**

- 4.1 Recommended IR-Reflow Temperature: 260°C



5	SHIELD	Copper alloy, 50u" min. nickel plating over all
4	HOLD DOWN	Copper alloy, 50u" min. matte tin plating 50u" min. under-plating Nickel
3	LOWER CONTACT	Copper alloy, contact area: gold flash, solder area: gold flash, under-plating
2	UPPER CONTACT	50u" min. nickel over all
1	INSULATOR	Thermoplastic, UL94V-0, black
NO.	PART NAME	DESCRIPTION

UNLESS OTHERWISE SPECIFIED TOLERANCE

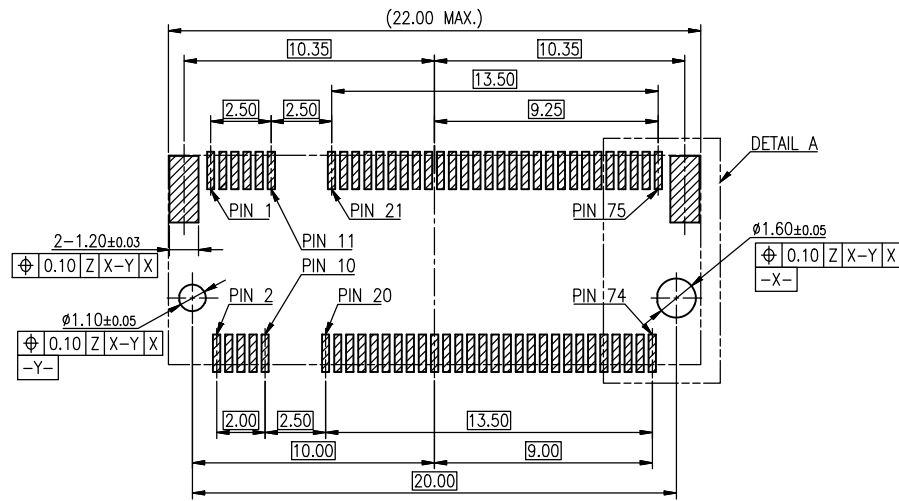
UNIT:	DECIMAL	LINEAR	ANGLES
mm	X.	±0.50	±5°
	X.X	±0.25	±3°
	X.XX	±0.12	±1°



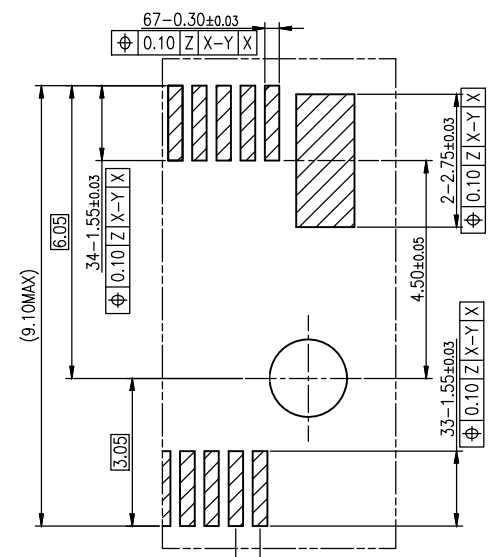
www.attend.com.tw

DRAWN	Fros	2024/09/05	DRAWN NAME:	M.2 Gen5 Socket, H4.2 B Key
CHECKED	Tim	2024/09/05		0.5 Pitch G/F, Black, Reel
APPROVED	Ken	2024/09/05	PRODUCT NO.	123A-42B02
SCALE	3.2/1	SHEET	1/4	SIZE
				A4
FILE NAME	123A-42B02_B_1			

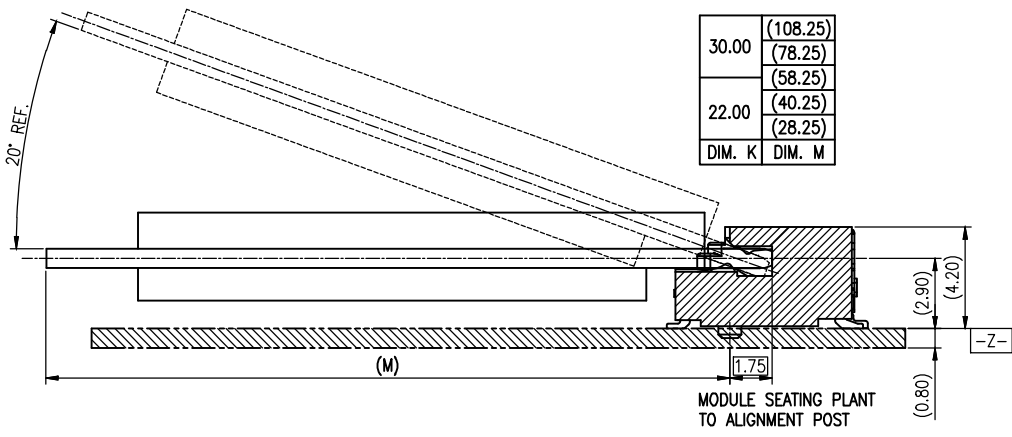
REV.	DESCRIPTION	DRAWN	DATE



RECOMMEND PCB LAYOUT(TOP VIEW)  
(DEFAULT TOLERANCE:±0.05mm)




DETAIL A  
SCALE 2:1



MODULE SEATING PLANT  
TO ALIGNMENT POST

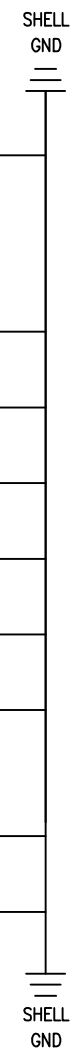
30.00	(108.25)
	(78.25)
	(58.25)
22.00	(40.25)
	(28.25)
DIM. K	DIM. M


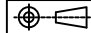
UNLESS OTHERWISE SPECIFIED TOLERANCE				 www.attend.com.tw
UNIT:	DECIMAL	LINEAR	ANGLES	
mm	X.	±0.50	±5°	
	X.X	±0.25	±3°	
	X.XX	±0.12	±1°	
DRAWN	Fros	2024/09/05	DRAWN NAME:	
CHECKED	Tim	2024/09/05	M.2 Gen5 Socket, H4.2 B Key 0.5 Pitch G/F, Black, Reel	
APPROVED	Ken	2024/09/05	PRODUCT NO. 123A-42B02	
SCALE	N/A	SHEET 2/4	SIZE A4	FILE NAME 123A-42B02_B_1

REV.	DESCRIPTION	DRAWN	DATE
------	-------------	-------	------

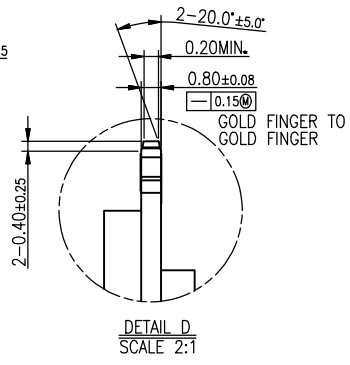
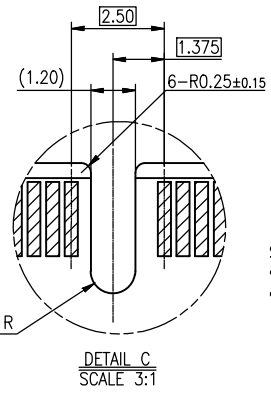
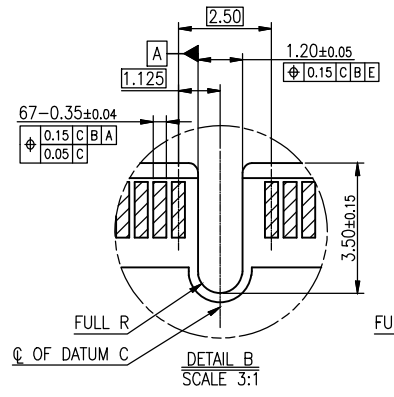
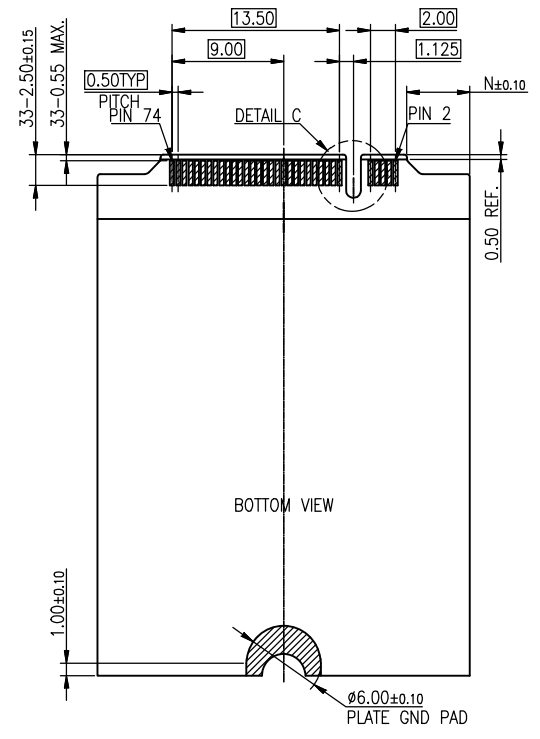
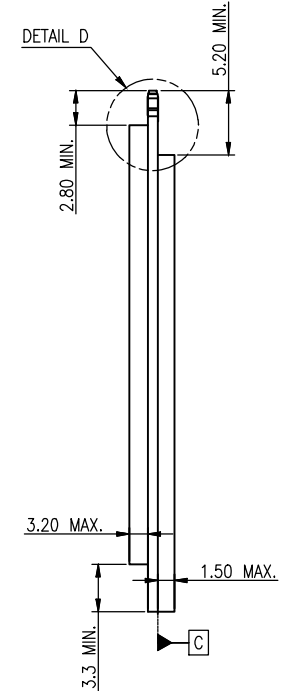
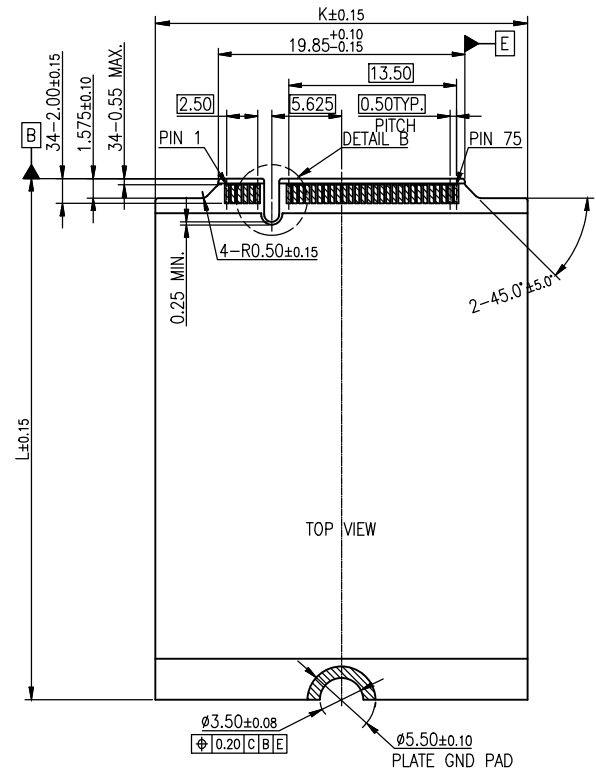
Table: Connector Pinout Definitions(Key B)

PIN	SIGNAL	SIGNAL	PIN
74	3.3V/VBAT	CONFIG_2	75
72	3.3V/VBAT	VIO_CFG(I) or GND	73
70	3.3V/VBAT	GND	71
68	SUSCLK(O)(0/1.8V/3.3V)	CONFIG_1	69
66	SIM_DETECT(O)	RESET#(O)(0/1.8V)	67
64	COEX_RXD(I)(0/1.8V)	ANTCTL3(I)(0/1.8V)	65
62	COEX_TXD(O)(0/1.8V)	ANTCTL2(I)(0/1.8V)	63
60	COEX3(I/O)(0/1.8V)	ANTCTL1(I)(0/1.8V)	61
58	NC	ANTCTL0(I)(0/1.8V)	59
56	NC	GND	57
54	PEWAKE#(I/O)(0/1.8V/3.3V)	REFCLKp	55
52	CLKREQ#(I/O)(0/1.8V/3.3V)	REFCLKn	53
50	PERST#(O)(0/1.8V/3.3V)	GND	51
48	GPIO_4(I/O)(0/1.8V)	PETn0/SATA-A+	49
46	GPIO_3(I/O)(0/1.8V)	PETn0/SATA-A-	47
44	GPIO_2(I/O)/ALERT#(I)/(0/1.8V)	GND	45
42	GPIO_1(I/O)/SMB_DATA(I/O)/(0/1.8V)	PERn0/SATA-B-	43
40	GPIO_0(I/O)/SMB_CLK(I/O)/(0/1.8V)	PERn0/SATA-B+	41
38	DEVSLP(O)	GND	39
36	UIM_PWR(I)	PETp1/USB3.1-Tx+/SSIC-TxP	37
34	UIM_DATA(I/O)	PETn1/USB3.1-Tx-/SSIC-TxN	35
32	UIM_CLK(I)	GND	33
30	UIM_RESET(I)	PERp1/USB3.1-Rx+/SSIC-RxP	31
28	PLA_S2#(I)/GPIO_8(I/O) (0/1.8V)	PERn1/USB3.1-Rx-/SSIC-RxN	29
26	GPIO_10(I/O) (0/1.8V)	GND	27
24	GPIO_7(I/O) (0/1.8V)	DPR(O)(0/1.8V)	25
22	GPIO_6(I/O)(0/1.8V)	GPIO_11(I/O)(0/1.8V)	23
20	GPIO_5(I/O)(0/1.8V)	CONFIG_0	21
	CONNECTOR KEY B	CONNECTOR KEY B	
10	GPIO_9/DAS/DSS(I/O)/LED_1#(I)(0/3.3V)	GND	11
08	W_DISABLE1#(O)(0/1.8V/3.3V)	USB_D-	09
06	FULL_CARD_POWER_OFF#(O)(0/1.8V or 3.3V)	USB_D+	07
04	3.3V	GND	05
02	3.3V	GND	03
		CONFIG_3	01




UNLESS OTHERWISE SPECIFIED TOLERANCE				 www.attend.com.tw
UNIT:	DECIMAL	LINEAR	ANGLES	
mm	X.	±0.50	±5°	
	X.X	±0.25	±3°	
	X.XX	±0.12	±1°	
DRAWN	Fros	2024/09/05	DRAWN NAME:	
CHECKED	Tim	2024/09/05	M.2 Gen5 Socket, H4.2 B Key 0.5 Pitch G/F, Black, Reel	
APPROVED	Ken	2024/09/05	PRODUCT NO. 123A-42B02	
	SCALE N/A	SHEET 3/4	SIZE A4	
			FILE NAME 123A-42B02_B_1	

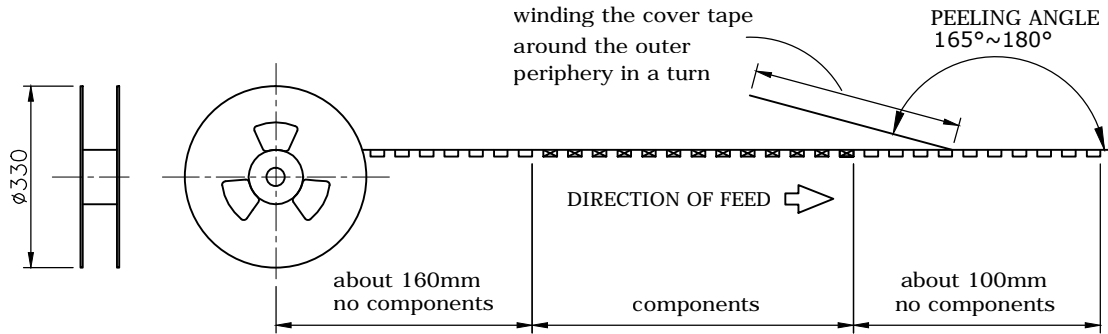
REV.	DESCRIPTION	DRAWN	DATE
------	-------------	-------	------



30.00	110.00 (108.25)	5.075	
	80.00 (78.25)		
22.00	60.00 (58.25)	1.075	
	42.00 (40.25)		
	30.00 (28.25)		
DIM. K	DIM. L	DIM. M	DIM. N

UNLESS OTHERWISE SPECIFIED TOLERANCE				 www.attend.com.tw
UNIT:	DECIMAL	LINEAR	ANGLES	
mm	X.	±0.50	±5°	
	X.X	±0.25	±3°	
	X.XX	±0.12	±1°	
DRAWN	Fros	2024/09/05	DRAWN NAME:	
CHECKED	Tim	2024/09/05	M.2 Gen5 Socket, H4.2 B Key 0.5 Pitch G/F, Black, Reel	
APPROVED	Ken	2024/09/05	PRODUCT NO. 123A-42B02	
SCALE	N/A	SHEET 4/4	SIZE A4	FILE NAME 123A-42B02_B_1

REV.	DESCRIPTION	DRAWN	DATE
1	INITIAL RELEASE	FROS	2024/09/05

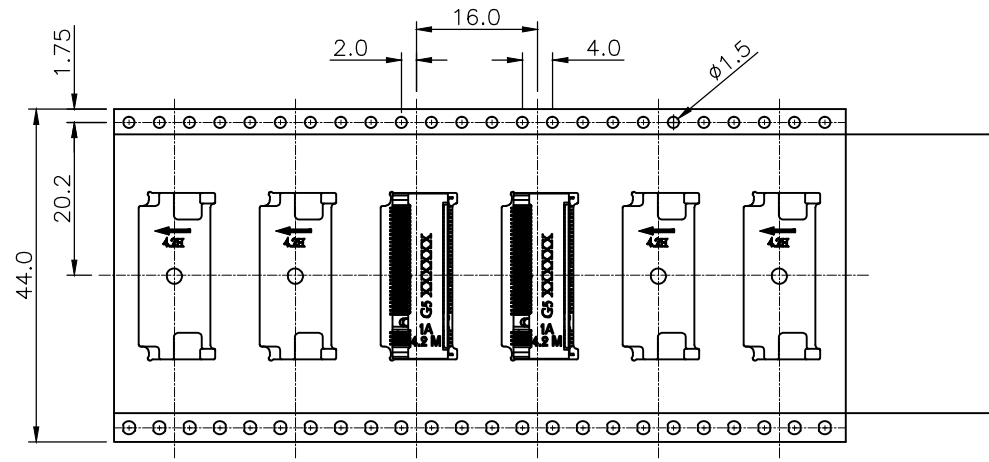


## PACKAGING SPECIFICATION:

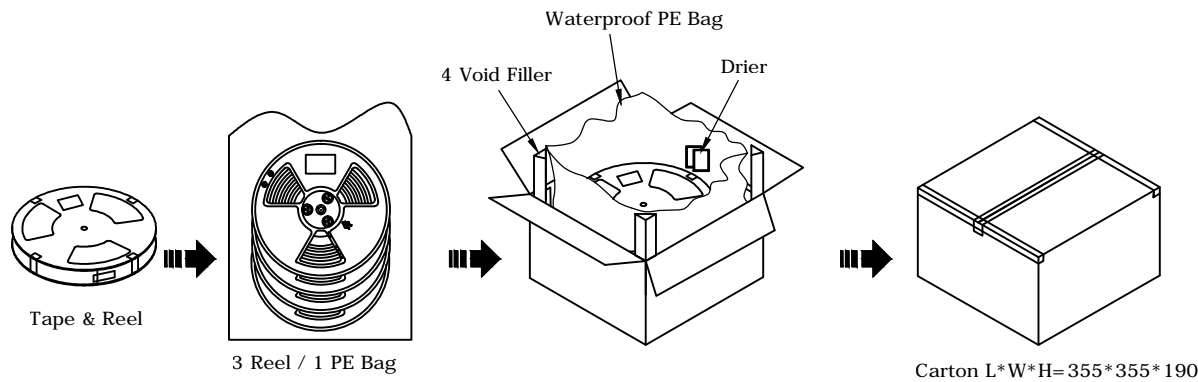
### 1. MATERIAL


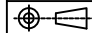
- 1.1 Embossed Carrier Tape: PS Black
- 1.2 Top Cover Tape: PET  
20-80g (Peel Speed 300mm/Minute)
- 1.3 Taping Reel: Plastic

### 2. PACKING



PART NO.	PCS/REEL	REEL/CARTON	PCS/ CARTON
123A-42B02	800	3	2400
123A-42E02			
123A-42M02			



UNLESS OTHERWISE SPECIFIED TOLERANCE					
UNIT:	DECIMAL	LINEAR	ANGLES		
mm	X.	±0.50	±5°	www.attend.com.tw	
	X.X	±0.25	±3°		
	X.XX	±0.12	±1°		
DRAWN	Fros	2024/09/05	DRAWN NAME: PACKING, M.2 Gen5 Socket, H4.2		
CHECKED	Tim	2024/09/05			
APPROVED	Ken	2024/09/05	PRODUCT NO.		
		SCALE 1/1	SHEET 1/1	SIZE A4	FILE NAME 123A-42X02_D_1