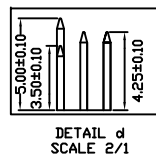
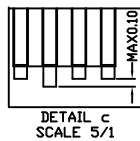
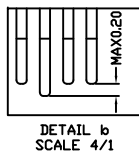
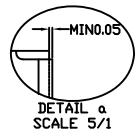
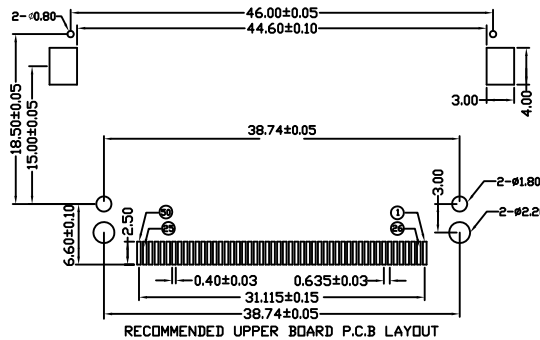
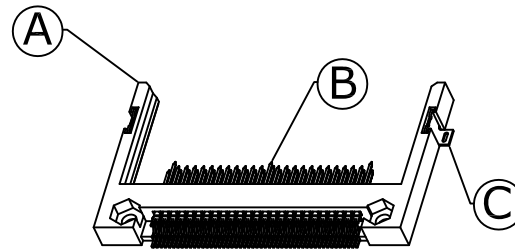
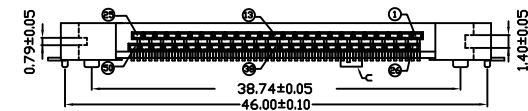
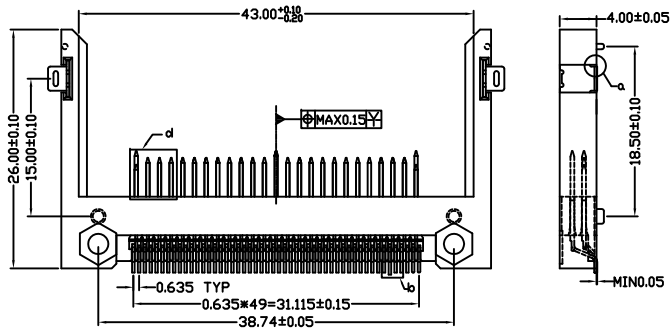
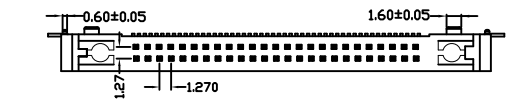


1	2	3	4	5	6	7	8	9	10
SWITCH CIRCUIT			MATERIAL AND FINISH AS BELOW						
WHEN CARD IS EJECTED		WHEN CARD IS INSERTED		A	Housing	LCP UL94V-0, Color:Ivory	E		
				B	Contact	Brass C2680, Gold Plated Over Nickel	F		
				C	Holddown	Brass C2680, Tin Plated	G		
				D			H		



PIN NUMBER	DIM.L
25 26	3.50
ALL OTHER PINS	4.25
1 13 38 50	5.00

### SPECIFICATION:

#### 1. ELECTRICAL

- 1.1 Current Rating: 0.5AMP
- 1.2 Voltage Rating: 100VAC
- 1.3 Contact Resistance: 40mΩ
- 1.4 Insulation Resistance: 1000MΩ
- 1.5 Dielectric Withstanding Voltage: 500VAC for 1 minute

#### 2. MECHANICAL

- 2.1 Durability: 10000Cycle
- 2.2 Insertion Force: 28.8N
- 2.3 Extraction Force: 4.9N

#### 3. ENVIRONMENTAL

- 3.1 Operating temperature range: -40°C to +85°
- 3.2 Storage temperature range: -40°C to +85°

#### 4. SOLDER ABILITY

- 4.1 Recommended IR Reflow Temperature: 260°C 10Sec

P1	P2	P3	P4	P5	P6	P7	P8	P9	P10	P11	P12
----	----	----	----	----	----	----	----	----	-----	-----	-----

#### PIN ASSIGNMENT

101D-TAAB-R01	CF Socket Slim Type Peg:38.74,Contact Area:Gold Flash
---------------	---

PRODUCT NO.	DESCRIPTION
-------------	-------------

UNLESS OTHERWISE SPECIFIED TOLERANCE

ANGLES	ANG.	±5°
LINEAR	0.	±0.3
	0.0	±0.25
	0.00	±0.20

SCALE AS SHOWN UNIT: mm

DRAWN Willis 2012/11/13

CHECKED Angel 2012/11/13

APPROVED Ken 2012/11/13



www.attend.com.tw

DRAWN NAME: CF Slim Type Socket Locating Peg:38.74

PRODUCT NO. 101D-TAAB-R01

FILE NAME 101D-TAAB-R01\_B\_1

REV.	DESCRIPTION	DATE	REV.	DESCRIPTION	DATE
1			4		
2			5		
3			6		

Revise:

Revise:

Revise:

SIZE A4 REV. 1.0